

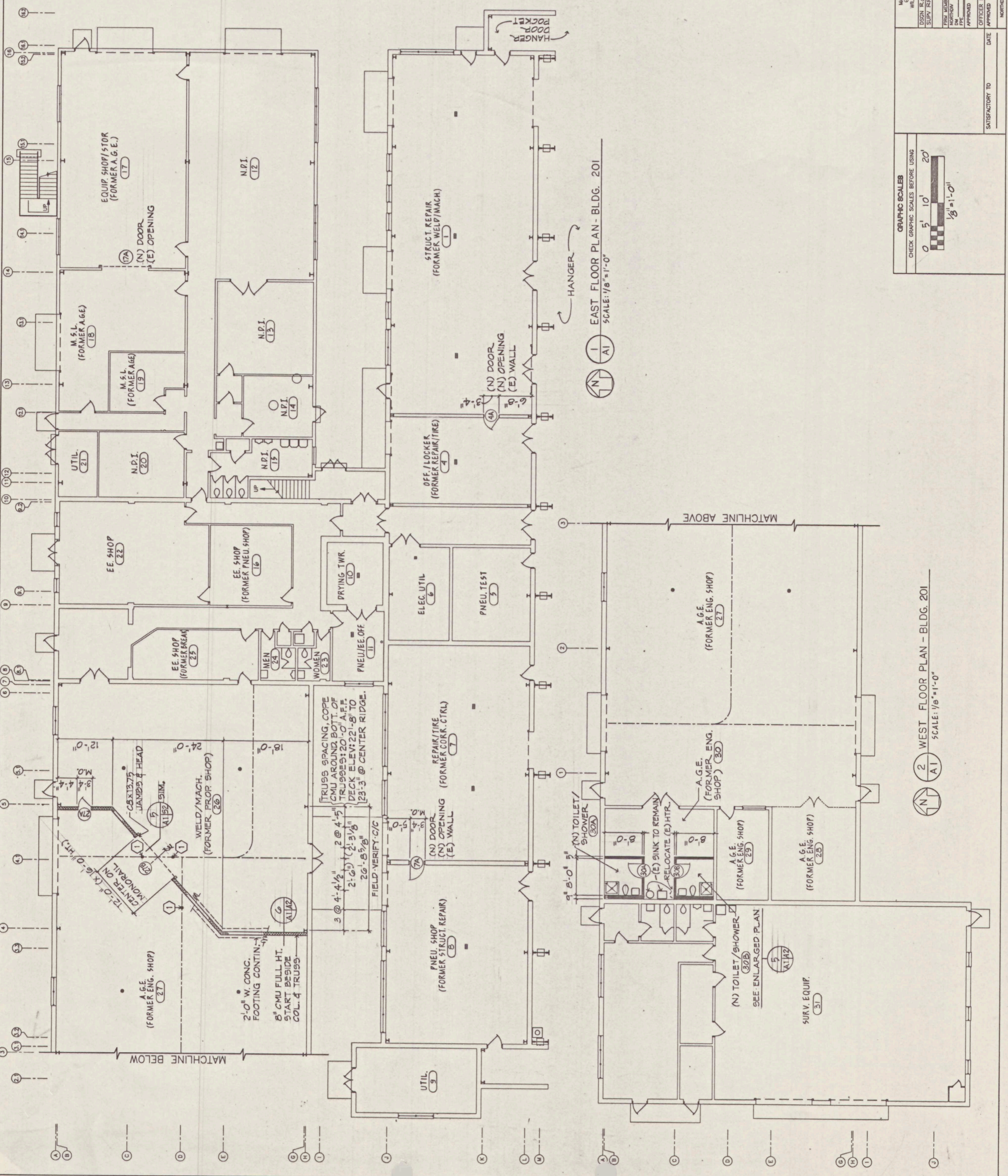
REVISIONS	DESCRIPTION	PREP'D	DATE	APPROVED
LTR				

LEGEND/SYMBOLS

(E) TO REMAIN
 (N) STEEL STUD & GYPSUM BD. PARTITION.
 (N) CMU
 (N) DOOR, SEE SCHEDULE, DWG. A9.
 (E) DOOR, NO WORK.

KEY TO NOTES ON THIS DRAWING

① PROVIDE STOPS ON (E) MONORAIL TO LIMIT TRAVEL OF (E) HOISTS. LOCATE IN COOPERATION W/ CONTRACTING OFFICER.



100% SUBMISSION - DEC. 1993

DEPARTMENT OF THE NAVY NAVAL FACILITIES ENGINEERING COMMAND
 NORTHERN DIVISION

LESTER
 ENGINE IAR FACILITY AND ALTER AIRCRAFT MAINTENANCE SHOPS
 ARCHITECTURAL - BLDG. 201
 FLOOR PLAN

DATE: 2104315
 OFFICER IN CHARGE: F 80091
 APPROVED: [Signature]

DATE: [Blank]
 APPROVED: [Blank]

SIZE: 3000 IDENT. NO. NAVFAC DRAWING: [Blank]
 SHEET NO.: A1
 CONSTR. CONTR. NO.: NS2472-92-C-0033
 SPEC. 04-92-0033 SHEET 13 OF 25

SCALE AS NOTED

GRAPHIC SCALES
 CHECK GRAPHIC SCALES BEFORE USING

0 5' 10' 20'
 1/8" = 1'-0"

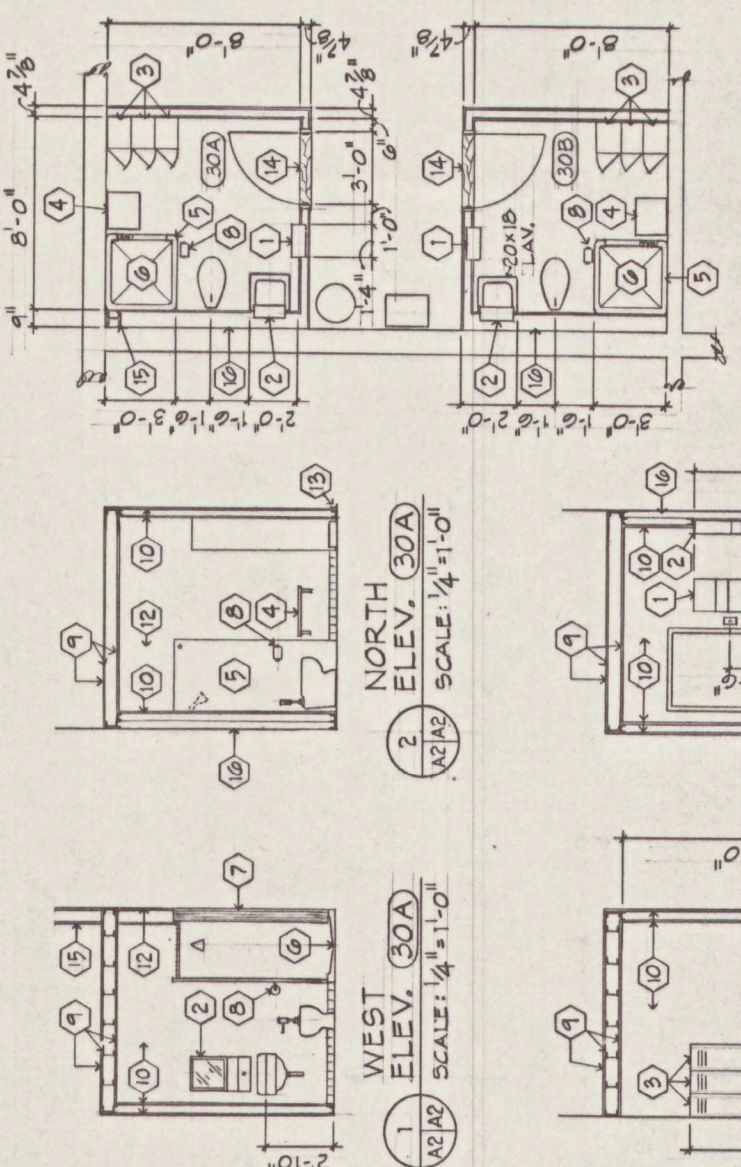
LTR	DESCRIPTION	PREP'D	DATE	APPROVED

FINISH SCHEDULE - BUILDING 201 - SELECTED ALTERATIONS IN EXISTING BUILDING

NO.	ROOM NAME	FLOOR		WALLS				CEILING	HEIGHT	NOTES
		CONCRETE	CERAMIC TILE	NORTH	EAST	SOUTH	WEST			
1	STRUCT. REPAIR								15'-4"	1 PATCH, PAINT REMOVALS. 2 REMOVE GYPSUM BD. PARTITIONS. 3 CUT (N) DOOR OPENING. 4 (N) EXPOSED CONC. FOOTING.
2									15'-4"	1
3									15'-4"	1
4	OFF./LOCKER								15'-4"	1
5	PNEU. TEST									NO FINISHES WORK
6	ELEC. UTIL.									NO FINISHES WORK
7	REPAIR/TIRE								15'-4"	1
8	PNEU. SHOP								15'-4"	1
9	UTIL.									NO FINISHES WORK
10	DRYING TWR.									NO FINISHES WORK
11	PNEU./EE. OFF.									NO FINISHES WORK
12	ND.I.									NO FINISHES WORK
13	N.P.I.									NO FINISHES WORK
14	N.P.I.									NO FINISHES WORK
15	N.P.I.									NO FINISHES WORK
16	EE. SHOP									NO FINISHES WORK
17	EQUIP. SHOP/STOR.									NO FINISHES WORK
18	M.S.L.									PATCH, PAINT (N) OVERHEAD DOOR
19	M.S.L.									PATCH, PAINT (N) OVERHEAD DOOR
20	N.P.I.									NO FINISHES WORK
21	UTIL.									NO FINISHES WORK
22	EE. SHOP									NO FINISHES WORK
23	WOMEN									NO FINISHES WORK
24	MEN									NO FINISHES WORK
25	EE. SHOP									NO FINISHES WORK
26	WELP/MACH.								22'-8"	1
27	A.G.E.								22'-8"	1
28	A.G.E.									NO FINISHES WORK
29	A.G.E.									NO FINISHES WORK
30	A.G.E.								22'-8"	1
30A	TOILET/SHOWER								9'-0"	5 BOTH SIDES.
30B	TOILET/SHOWER								9'-0"	5 BOTH SIDES.
31	SURVIVAL EQUIPMENT									NO FINISHES WORK

GENERAL NOTE: THE "NO FINISHES WORK" NOTES ABOVE APPLY TO ALL THE ROOMS LISTED, HOWEVER IF ANY EXISTING FINISHES IN THESE ROOMS ARE DISTURBED DUE TO INSTALLATION OF BUILDING SYSTEMS REQUIRED FOR THIS PROJECT, RESTORATION SHALL BE MADE TO THESE FINISHES.

APPLICATION	MATERIAL	MFR.	COLOR
FLOOR:	CERAMIC TILE	AMERICAN OLEAN	# A52 BUFF GRANITE
	VGT	AMERICAN EXELON	# 51839 FORTRESS WHITE
WALL BASE:	CERAMIC TILE	AMERICAN OLEAN	# A52 BUFF GRANITE
	VINYL	ARMSTRONG	# 14123 CHARCOAL GREY
WALLS:	CMU	MA BRUDER	# 5903 P MARBLE CREAM
	GYPSUM BD.	MA BRUDER	# 5903 P MARBLE CREAM
	STEEL DOORS & FRAME	MA BRUDER	# 5573 D BLUE LOTUS
	STRUCTURAL STEEL COLUMN ROOM 30A	MA BRUDER	# 5573 D BLUE LOTUS
CEILING:	GYPSUM BD.	MA BRUDER	# 5903 P MARBLE CREAM
ACCESSORIES:	FREEIN. TOILET & SHOWER ENCLOSURES	METPAR	# 880 DANISH BLUE



PLAN: TOILET RMS.
SCALE: 1/4" = 1'-0"

NORTH ELEV. 30A
SCALE: 1/4" = 1'-0"

SOUTH ELEV. 30A
SCALE: 1/4" = 1'-0"

EAST ELEV. 30A
SCALE: 1/4" = 1'-0"

ROOM 30B SIMILAR BUT OPPOSITE HAND

WALL SECTION
SCALE: 3/4" = 1'-0"

- KEYNOTES - THIS DWG.
- TOWEL & WASTE, SEMI-RECESSED (16" WIDE x 8" DEEP, RECESSED 4") CENTER ON LAV.
 - MIRROR & SOAP DISP., ABOVE EACH LAV. (RECESSED 4").
 - METAL LOCKERS 12" WIDE X 18" DEEP, CLOSED FRONT & END BASES.
 - BENCH (18" x 16" FOLD-UP SEAT).
 - ENAMELED STEEL SHOWER ENCLOSURE.
 - SHOWER RECEPTOR, 36" SQUARE.
 - SHOWER CURTAIN & ROD.
 - TOILET PAPER HOLDER.
 - 6" DEEP, 20 GA. STEEL JOISTS @ 16" O.C. 3/8" THICK GYPSUM BD. CEILING, PAINTED. 3/4" T & G STRUCTURAL PLYWOOD DECK, PAINTED. 40 PSF LIVE LOAD ALLOWABLE.
 - 5 3/8" DEEP, 20 GA. STEEL STUDS @ 16" O.C. 3/8" THICK GYPSUM BD., PAINTED. WATER RESISTANT GYPSUM BD. INSIDE ROOMS 30A & 30B.
 - CERAMIC TILE WALL BASE. SAME AS (2) SHEET A11.
 - (E) CMU, NEW PAINT.
 - VINYL WALL BASE (OUTSIDE TOILET ROOM).
 - MARBLE THRESHOLD.
 - (E) STEEL COLUMN.
 - PIPE SPACE.

100% SUBMISSION - DEC. 1993

DEPARTMENT OF THE NAVY - NAVAL FACILITIES ENGINEERING COMMAND
NORTHERN DIVISION

WILLIAM GROVE, PA

ENGINEER: MADA ENGINEERING INC.
DESIGNER: MADA ENGINEERING INC.
DRAWN BY: MADA ENGINEERING INC.
CHECKED BY: MADA ENGINEERING INC.
DATE: 12/10/93

PROJECT: AIR RESERVE FACILITY
ENGINEER: MADA ENGINEERING INC.
ARCHITECTURAL - BLDG. 201
FINISH SCHEDULE & INTERIOR DET'S.

SCALE: AS NOTED

CONSTR. CONTR. NO. 86247-92-C-0033
SPEC. 04-92-0033

SHEET 20 OF 58

REVISIONS

LTR	DESCRIPTION	PREPD	DATE	APPROVED

COLOR SCHEDULE: NEW E1&R AND CCF
 PROPRIETARY DESIGNATIONS ARE FOR COLOR MATCH ONLY.

FLOORS:

- * CONCRETE SEALER WHITE PIGMENTED
- * CERAMIC TILE, AMERICAN OLEAN #452 BUFF GRANITE
- * VCT, ARMSTRONG EXLON #51837 FORTRESS WHITE

WALL BASE:

- * CERAMIC TILE, AMERICAN OLEAN #452 BUFF GRANITE
- * VINYL, ARMSTRONG #14123 CHARCOAL GREY

WALLS:

- * CMU, MA BRUWER #5703 P MARBLE CREAM
- * GYPSUM BOARD, MA BRUWER #5703 P MARBLE CREAM
- * PREFER. STEEL PANELS, FLEXSPAN #250 WHITE
- * CAB. DOORS & DRAWERS, WILSON ART #D19-6 WINEBERRY
- * WINDOW BLINDS, LEVELOR, WHITE
- * MOVING EQUIP. (CRANES), MA BRUWER #630-192 SAFETY-ORANGE.

EXTERIOR:

- * COLOR / MFR.
- * PREFER. WINDOWS, DOOR SHELTER: KANNER MILITARY BLUE
- * PREFER. LADDERS: AIRSTREAM PRODUCTS #52 MILITARY BLUE
- * PREFER. STEEL SIDING, TRIM, FLEXSPAN #220 BLUE
- * GUTTERS, DOWNSPOUTS, & ROOFING
- * FIELD PAINTED DOWNSPOUTS, MA BRUWER #5573 D BLUE LOTUS
- * DOORS & FRAMES
- * FIELD PAINTED BOLLARDS, LADDERS, MA BRUWER #630-102 SAFETY-YELLOW

ACCESSORIES:

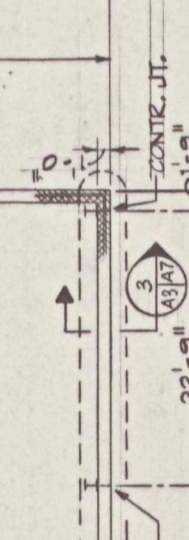
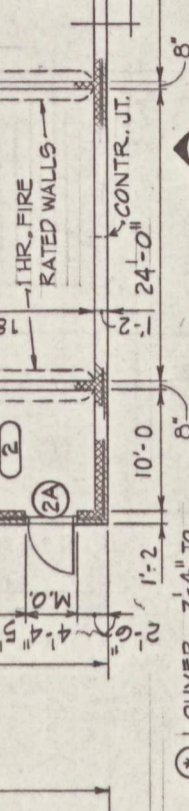
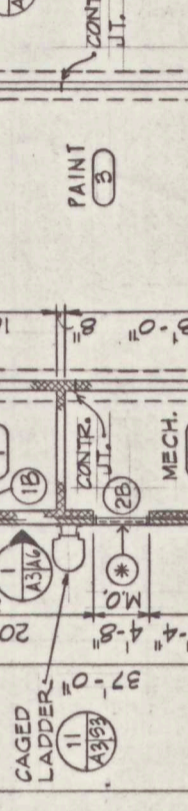
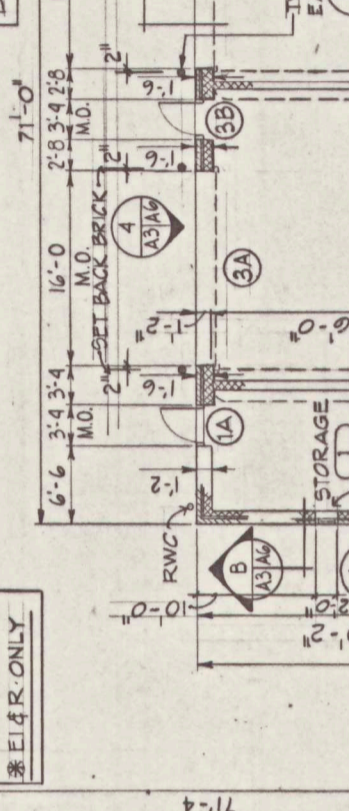
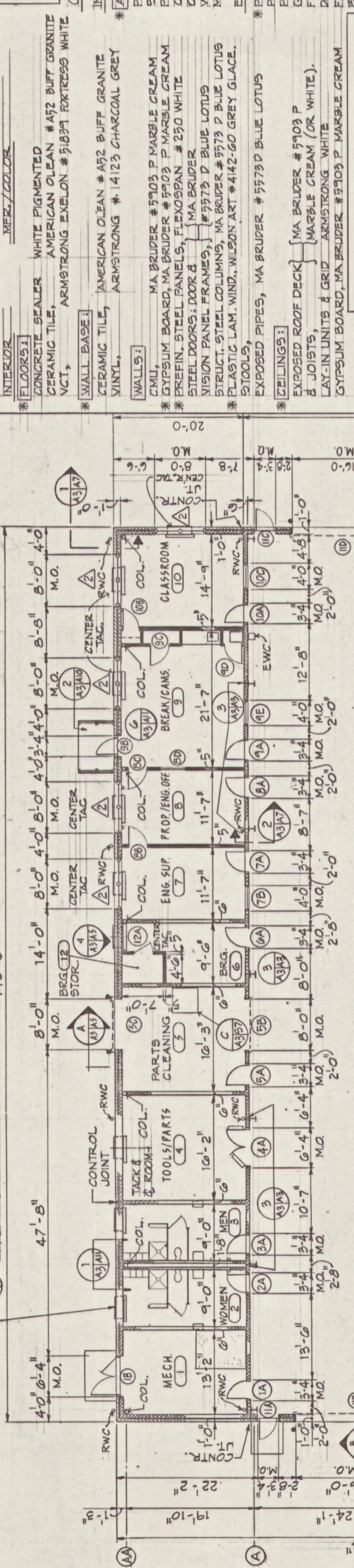
- * REFIN. TOILET & SHOWER ENCLOSURES, METPAR #800 DANISH BLUE
- * PLASTIC LAM. COUNTER TOP, WILSON ART #4142-60 GREY GLAZE.
- * CABINET FRONT STAINED WOOD - MEDIUM OAK
- * WINDOW BLINDS, LEVELOR, WHITE
- * MOVING EQUIP. (CRANES), MA BRUWER #630-192 SAFETY-ORANGE.

EXTERIOR:

- * COLOR / MFR.
- * PREFER. WINDOWS, DOOR SHELTER: KANNER MILITARY BLUE
- * PREFER. LADDERS: AIRSTREAM PRODUCTS #52 MILITARY BLUE
- * PREFER. STEEL SIDING, TRIM, FLEXSPAN #220 BLUE
- * GUTTERS, DOWNSPOUTS, & ROOFING
- * FIELD PAINTED DOWNSPOUTS, MA BRUWER #5573 D BLUE LOTUS
- * DOORS & FRAMES
- * FIELD PAINTED BOLLARDS, LADDERS, MA BRUWER #630-102 SAFETY-YELLOW

ACCESSORIES:

- * REFIN. TOILET & SHOWER ENCLOSURES, METPAR #800 DANISH BLUE
- * PLASTIC LAM. COUNTER TOP, WILSON ART #4142-60 GREY GLAZE.
- * CABINET FRONT STAINED WOOD - MEDIUM OAK
- * WINDOW BLINDS, LEVELOR, WHITE
- * MOVING EQUIP. (CRANES), MA BRUWER #630-192 SAFETY-ORANGE.



FINISH SCHEDULE - ENGINE INSPECTION AND REPAIR FACILITY (EI&R)

ABBREVIATIONS	FLOOR	WALL-BASE	WALLS	CEILING	HEIGHT	NOTES
B2. BOARD	CONCRETE	CONCRETE	CONCRETE	CONCRETE	12'-0" TO 12'-0" HT.	1 TO 12'-0" HT.
CMU CONCRETE MASONRY UNITS.	CONCRETE	CONCRETE	CONCRETE	EXPOSED DECK	12'-0" TO 15'-0" SLOPES	2 ABOVE 12'-0" BELOW CEILING
VCT VINYL COMPOSITION TILE	VCT	VCT	VCT	FIELD PAINT	9'-0"	3 SAME FINISHES IN CLOSETS
REFIN. PREFINISHED (NO FIELD PAINT).	REFIN. PANEL	REFIN. PANEL	REFIN. PANEL	FIELD PAINT	10'-0"	4 TO 7'-4" HT.
MECH.	MECH.	MECH.	MECH.	FIELD PAINT	10'-0"	5 ABOVE 7'-4" HT. SEE CONC. SPEC.
WOMEN	WOMEN	WOMEN	WOMEN	FIELD PAINT	9'-0"	
MEN	MEN	MEN	MEN	FIELD PAINT	10'-0"	
TOOLS/PARTS	TOOLS/PARTS	TOOLS/PARTS	TOOLS/PARTS	FIELD PAINT	10'-0"	
PARTS CLEANING	PARTS CLEANING	PARTS CLEANING	PARTS CLEANING	FIELD PAINT	10'-0"	
BRG.	BRG.	BRG.	BRG.	FIELD PAINT	10'-0"	
ENG. SUP.	ENG. SUP.	ENG. SUP.	ENG. SUP.	FIELD PAINT	10'-0"	
PROP./ENG. OFF.	PROP./ENG. OFF.	PROP./ENG. OFF.	PROP./ENG. OFF.	FIELD PAINT	9'-0"	
BREAK/ICAMS	BREAK/ICAMS	BREAK/ICAMS	BREAK/ICAMS	FIELD PAINT	9'-0"	
CLASSROOM	CLASSROOM	CLASSROOM	CLASSROOM	FIELD PAINT	9'-0"	
ENG./PROP. MAINT. AREA	ENG./PROP. MAINT. AREA	ENG./PROP. MAINT. AREA	ENG./PROP. MAINT. AREA	FIELD PAINT	25'-4" TO 28'-4" SLOPES	
BRG. STORAGE	BRG. STORAGE	BRG. STORAGE	BRG. STORAGE	FIELD PAINT	10'-0"	

FINISH SCHEDULE - CORROSION CONTROL FACILITY (CCF)

ABBREVIATIONS	FLOOR	BASE	WALLS	CEILING	HEIGHT	NOTES
CMU CONCRETE MASONRY UNITS.	CONCRETE	CONCRETE	CONCRETE	CONCRETE	20'-3" TO 20'-11" SLOPES	
STORAGE	STORAGE	STORAGE	STORAGE	FIELD PAINT	20'-3" TO 20'-11" SLOPES	
MECH.	MECH.	MECH.	MECH.	FIELD PAINT	21'-1" TO 21'-7" SLOPES	
PAINT	PAINT	PAINT	PAINT	FIELD PAINT	20'-3" TO 21'-7" SLOPES	
A.G.B.R.	A.G.B.R.	A.G.B.R.	A.G.B.R.	FIELD PAINT	20'-3" TO 21'-7" SLOPES	

LEGEND/SYMBOLS

- (N) STUD & GYPSUM BR.
- (N) CMU
- (N) BRICK
- INACTIVE LEAF
- ACTIVE LEAF
- (N) PAIR OF DOORS
- WINDOW TYPE

GRAPHIC SCALES

CHECK GRAPHIC SCALES BEFORE USING

1" = 1'-0"

1/8" = 1'-0"

100% SUBMISSION - DEC. 1993

DEPARTMENT OF THE NAVY NAVAL FACILITIES ENGINEERING COMMAND
 NORTHERN DIVISION

LESTER WILLOW GROVE, PA 19090

ENGINE I&R FACILITY AND ALTER AIRCRAFT MAINTENANCE SHOPS ARCHITECTURAL - E. I & R AND CCF FLOOR PLANS & FINISH SCHEDULES

DATE: _____

DRAWN BY: _____

CHECKED BY: _____

DATE: _____

DES. SHE. NO. _____

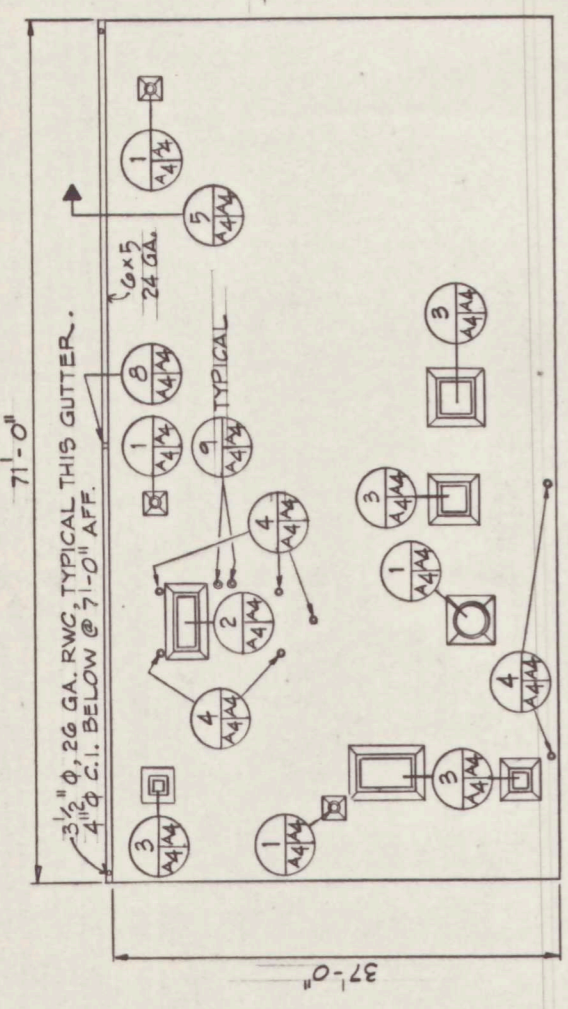
PROJECT NO. _____

SCALE: AS NOTED

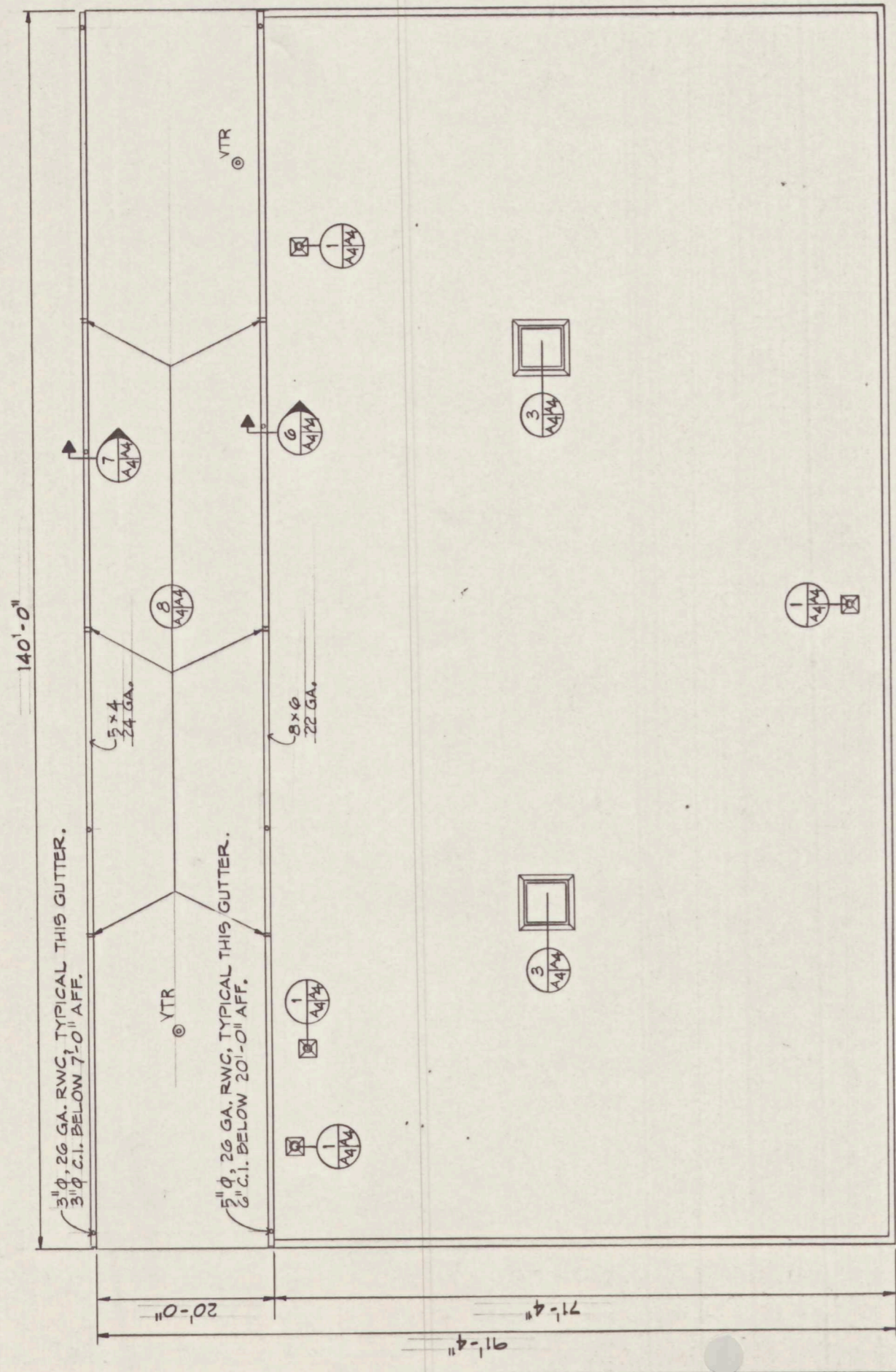
SCALE: 1/8" = 1'-0"

SHEET 21 OF 53

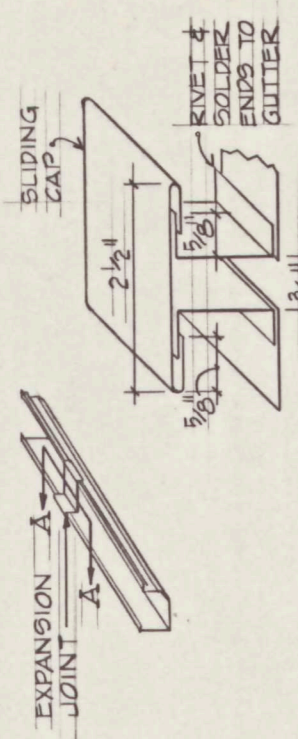
REVISIONS		PREP'D	DATE	APPROVED
LTR	DESCRIPTION			



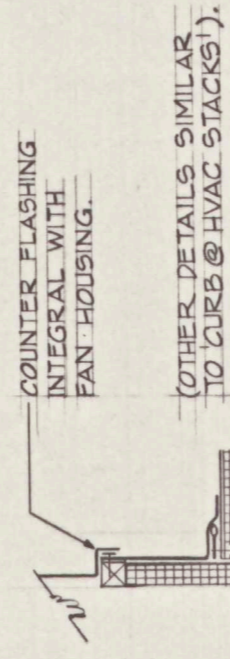
1 ROOF PLAN - ENGINE I & R BUILDING
SCALE: 1/8" = 1'-0"



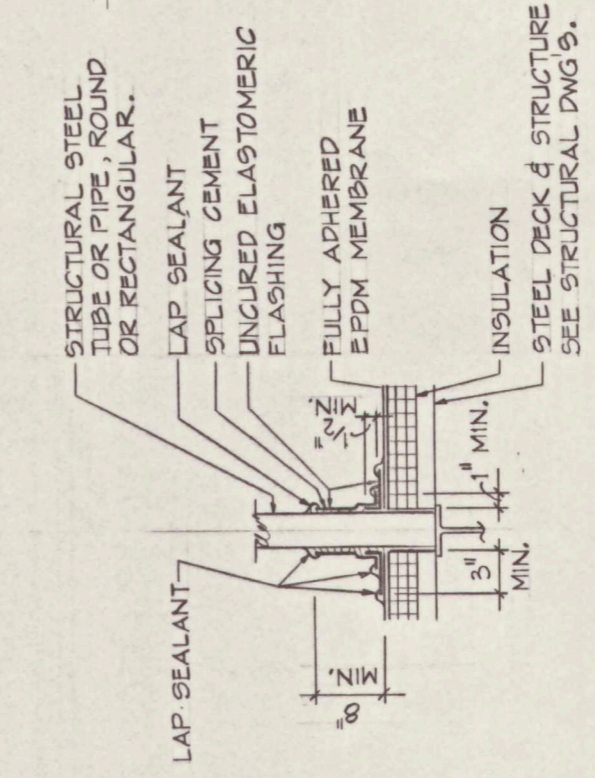
2 ROOF PLAN - CORROSION CONTROL FACILITY
SCALE: 1/8" = 1'-0"



8 GUTTER EXPANSION JOINT
SCALE: NO SCALE



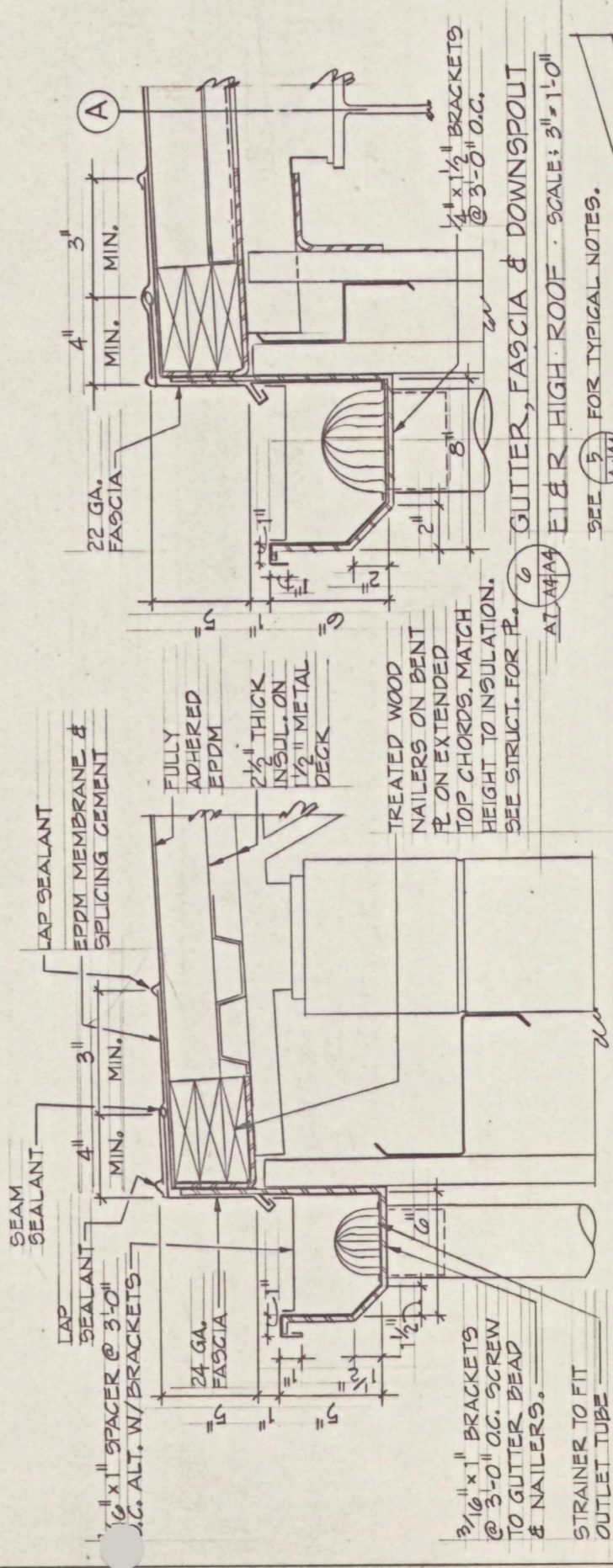
3 CURB @ EXHAUST FANS
SCALE: 1/2" = 1'-0"



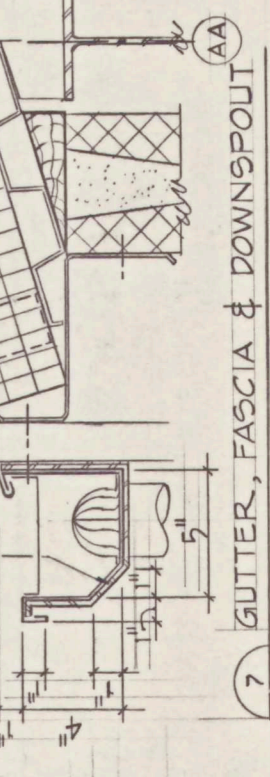
1 CURB @ HVAC STACKS (4" Ø TO 34" Ø)
SCALE: 1/2" = 1'-0"

4 STRUCT. TUBE SUPPORTS @ EQUIP.
SCALE: 1/2" = 1'-0"

5 GUTTER, FASCIA & DOWNSPOUT
SCALE: 3/8" = 1'-0"

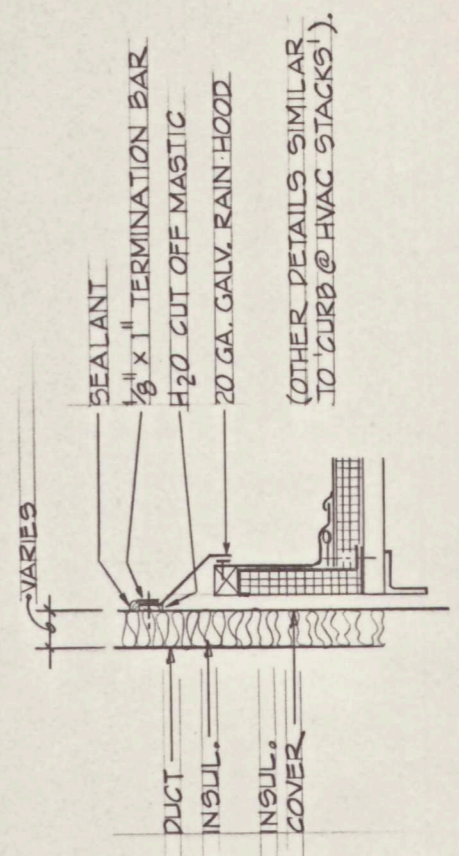
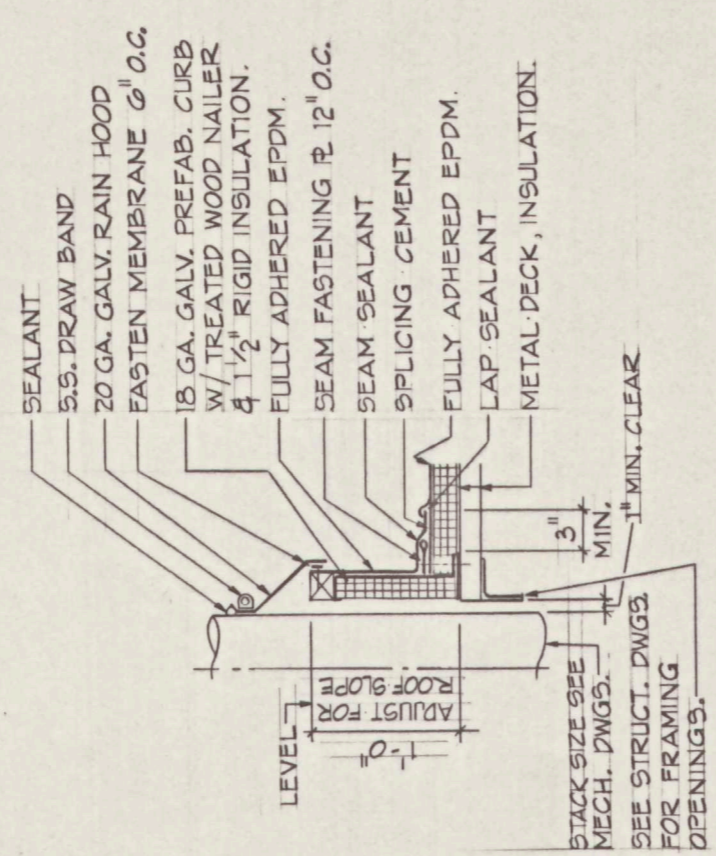


6 GUTTER, FASCIA & DOWNSPOUT
SCALE: 3/8" = 1'-0"



7 GUTTER, FASCIA & DOWNSPOUT
SCALE: 3/8" = 1'-0"

9 PIPE & CONDUIT PENETRATIONS
SCALE: 3/8" = 1'-0"



2 CURB @ DUCT
SCALE: 1/2" = 1'-0"

100% SUBMISSION - DEC. 1993

DEPARTMENT OF THE NAVY NAVAL FACILITIES ENGINEERING COMMAND
NORTHERN DIVISION

MADA ENGINEERING INC.
607-A EASTON ROAD
WILLOW GROVE, PA 19090

LESTER
AIR RESERVE FACILITY
ENGINE I&R FACILITY AND ALTER AIRCRAFT MAINTENANCE SHOPS
WILLOW GROVE, PA

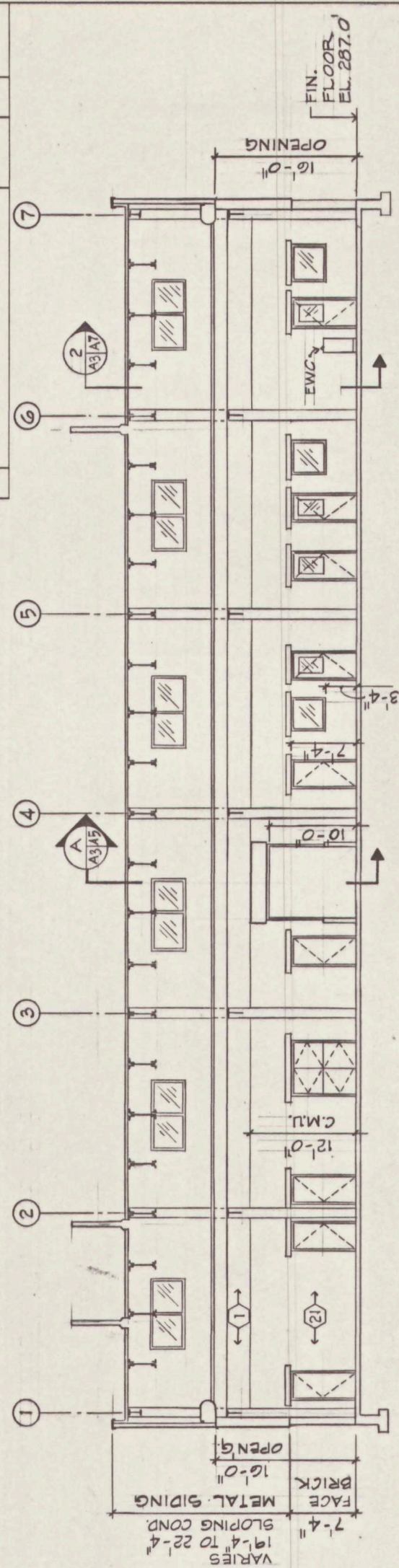
ARCH. ENG. I & R, & CCF
ROOF PLANS & DETAILS

GRAPHIC SCALES
CHECK GRAPHIC SCALES BEFORE USING

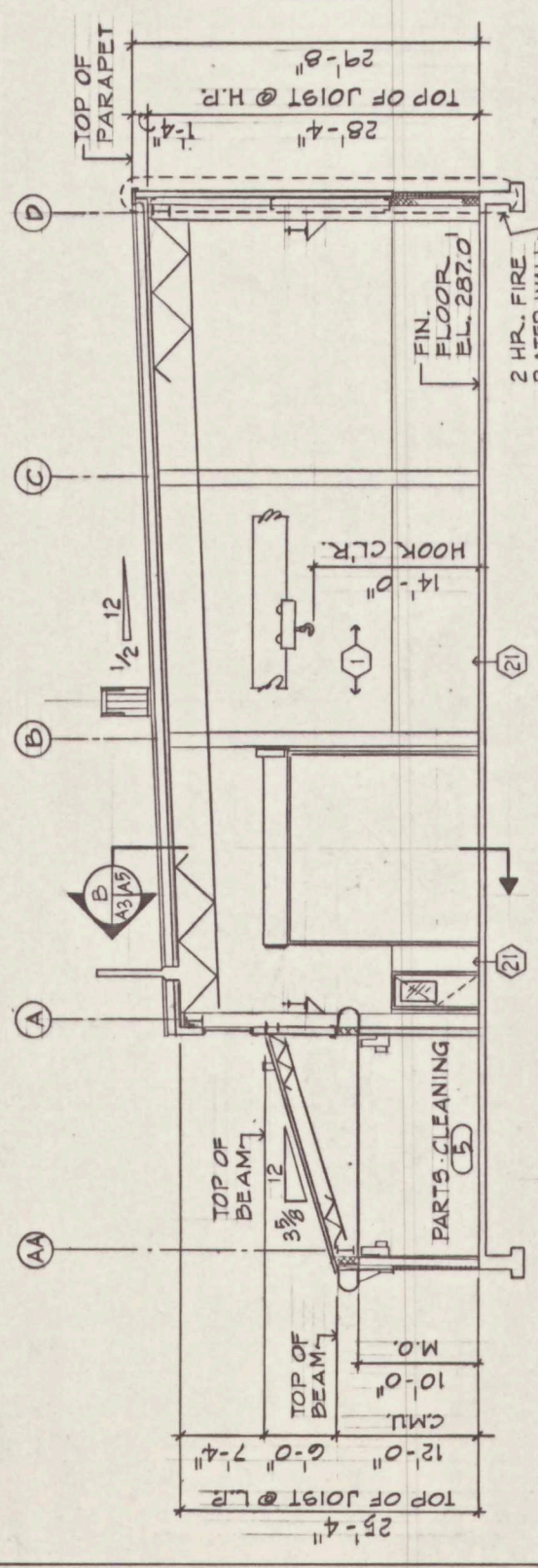
0 5' 10' 20'
1/8" = 1'-0"
1/2" = 1'-0"
3/8" = 1'-0"

DATE: 2104318
F 80091
CONSTR. CONTR. NO. N6272-92-C-0033
SPEC. 04-92-0033 SHEET 22 OF 53

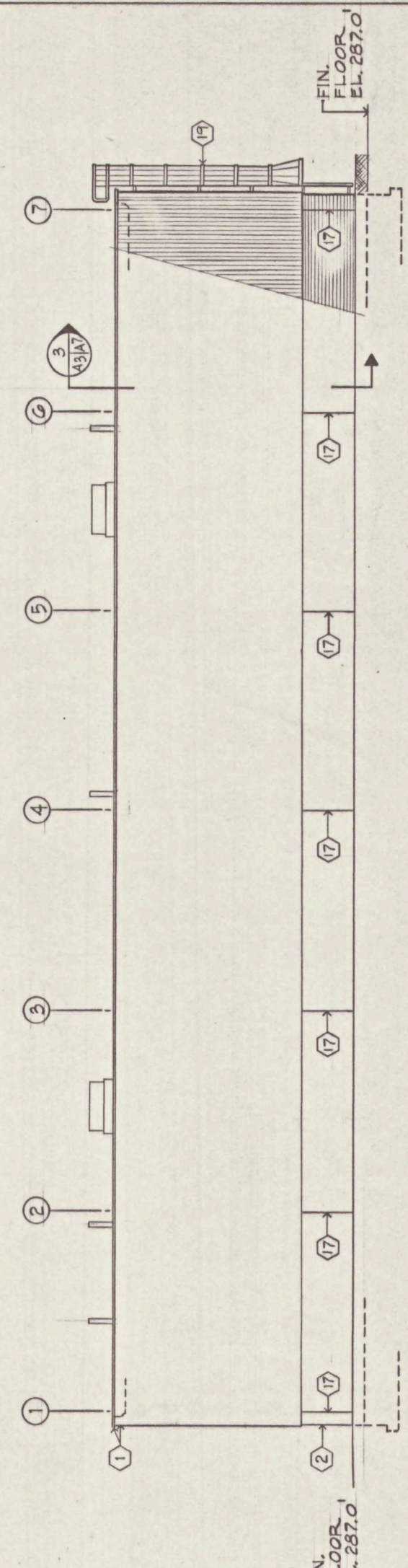
REVISIONS		
TR	DESCRIPTION	DATE APPROVED



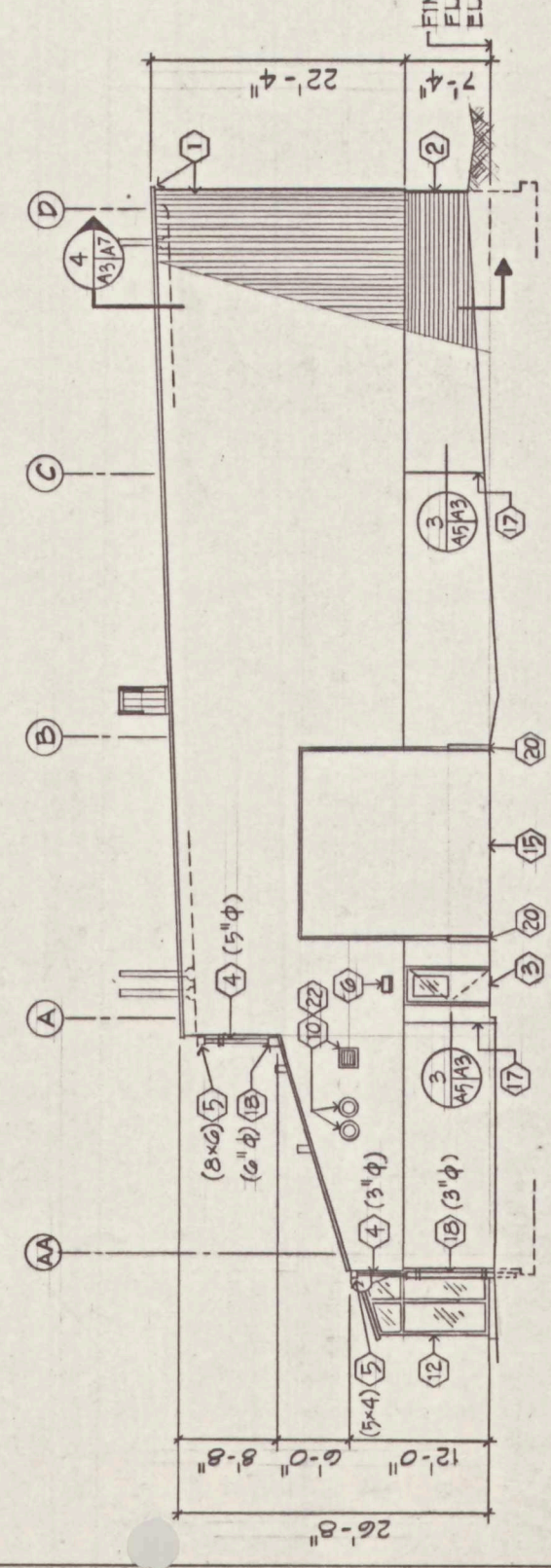
A BUILDING SECTION
LOOKING EAST
SCALE: 1/8" = 1'-0"



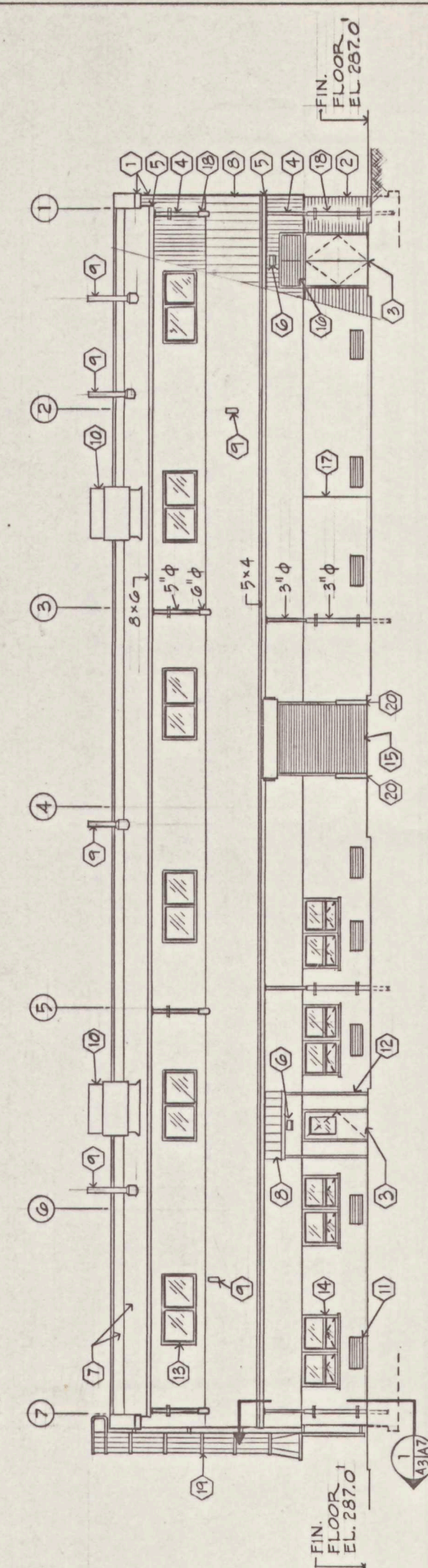
B BUILDING SECTION
LOOKING NORTH
SCALE: 1/8" = 1'-0"



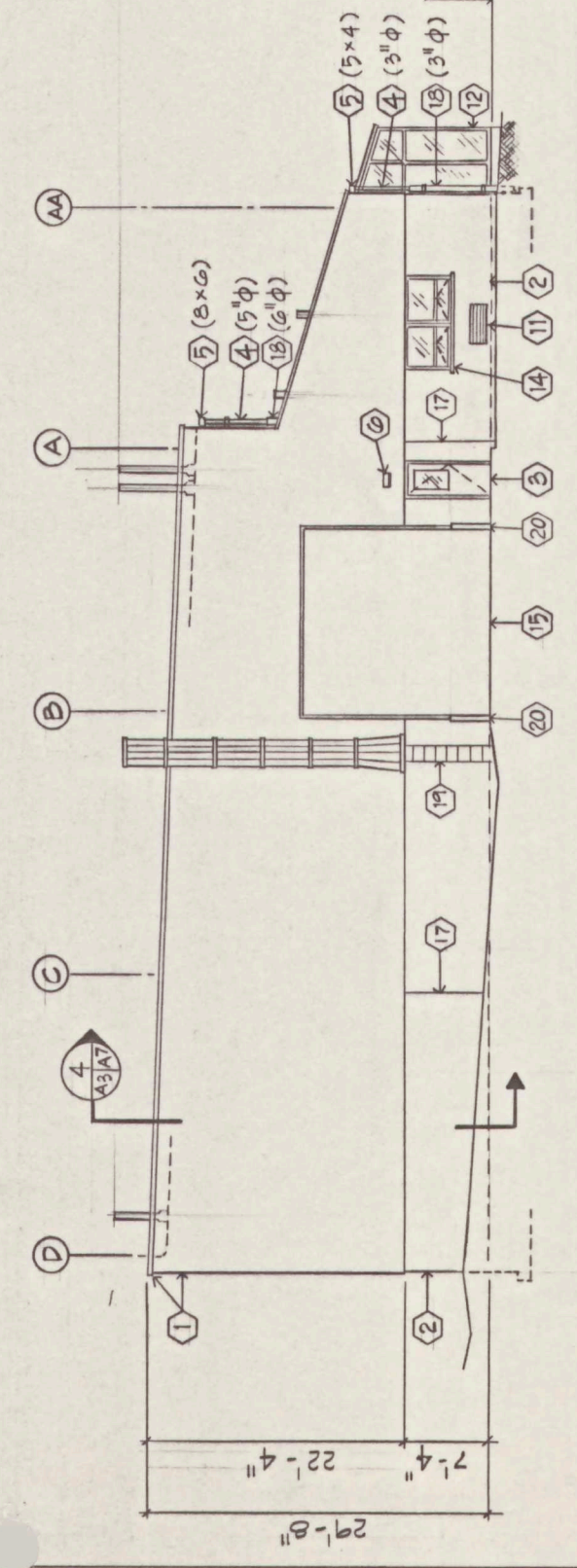
1 WEST ELEVATION
SCALE: 1/8" = 1'-0"



3 SOUTH ELEVATION
SCALE: 1/8" = 1'-0"

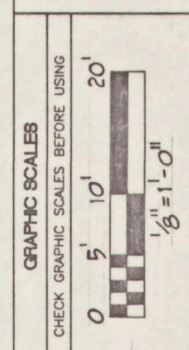


2 EAST ELEVATION
SCALE: 1/8" = 1'-0"



4 NORTH ELEVATION
SCALE: 1/8" = 1'-0"

- KEYNOTES**
- (1) METAL SIDING & TRIM, PREFINISHED
 - (2) BRICK VENEER
 - (3) STEEL DOOR-C & FRAME, FIELD PAINTED
 - (4) SHEET METAL RWC, PREFINISHED
 - (5) SHEET METAL GUTTER, PREFINISHED
 - (6) LIGHT FIXTURE
 - (7) ELASTOMERIC SHEET ROOFING & FLASHING
 - (8) METAL ROOFING, PREFINISHED
 - (9) STACKS, SEE MECH. DRAWINGS
 - (10) EXHAUST FANS, SEE MECH. DRAWINGS
 - (11) LOUVERS, PREFINISHED (PART OF AC UNIT)
 - (12) GLASS & ALUMINUM SHELTER (NO FRONT)
 - (13) FIXED WINDOW
 - (14) OPERABLE WINDOW
 - (15) ROLLING SERVICE DOOR & FRAME
 - (16) PREFIN. WALL LOUVER IN STEEL FRAME, FIELD PAINTED
 - (17) CONTROL JOINT
 - (18) CAST IRON RWC, FIELD PAINTED
 - (19) CAGED LADDER, FIELD PAINTED
 - (20) BOLLARD, FIELD PAINTED
 - (21) C.M.U., FIELD PAINTED
 - (22) WALL SYSTEM FLASHING COLLARS.



100% SUBMISSION - DEC 1993

DEPARTMENT OF THE NAVY NAVAL FACILITIES ENGINEERING COMMAND
NORTHSTAR DIVISION

LESTER AIR RESERVE FACILITY
ENGINE I&R FACILITY AND ALTER AIRCRAFT MAINTENANCE SHOPS
WILLOW GROVE, PA

MADA ENGINEERING INC.
WILLOW GROVE, PA 19090

ISSN: B300135 CKR BSM
SUPP. BSM: 01 ENGR LAGS

ARCHITECTURAL - ENG. I & R
EXTERIOR ELEVATIONS & SECTIONS

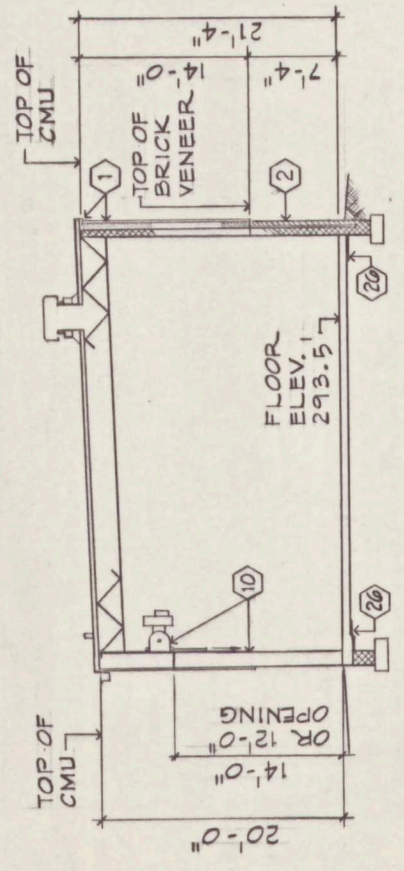
DATE: 2104319
SIZE: 8 1/2" x 11"
DRAWING NO.: 2104319
DES. SH. NO.: A5

APPROVED: 80091
OFFICER IN CHARGE

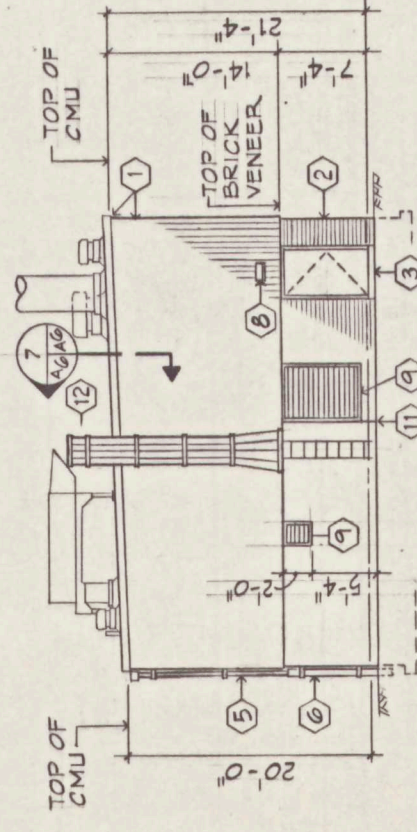
DATE: _____
SATISFACTORY TO: _____

SCALE AS NOTED
SHEET 23 OF 58

REVISIONS	DESCRIPTION	PREP'D	DATE	APPROVED
LTR				

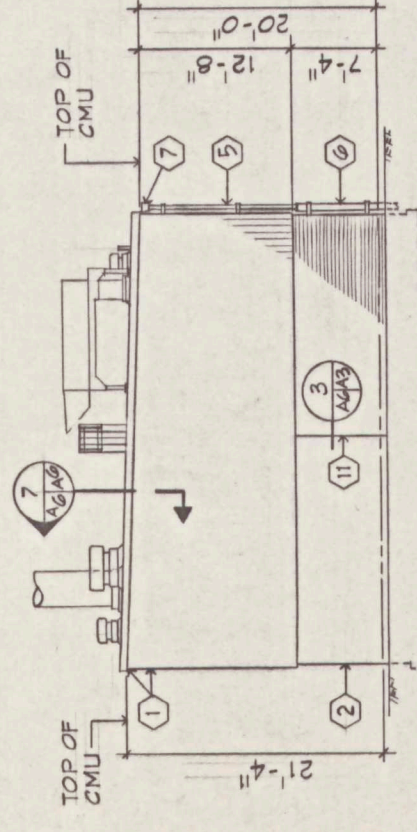


A SECTION LOOKING EAST - C.C.F.
SCALE: 1/8" = 1'-0"



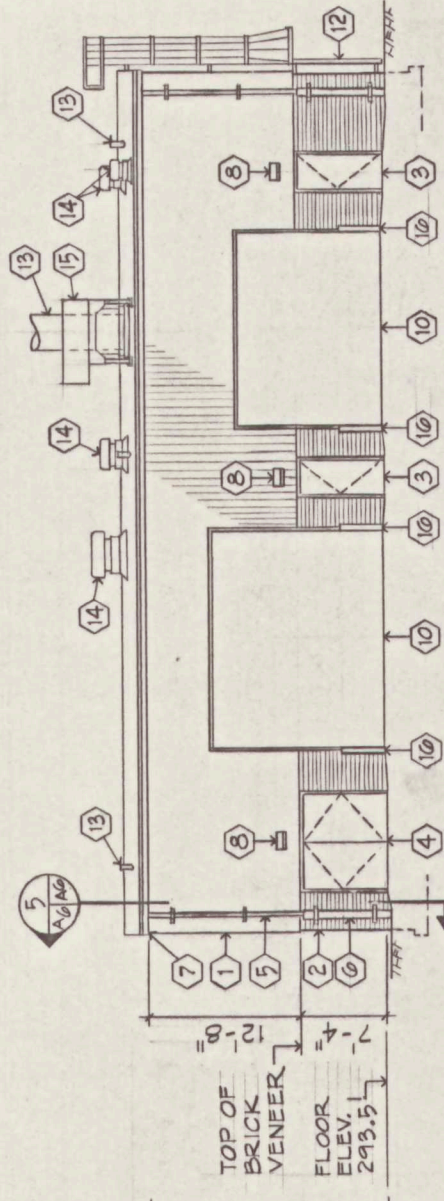
B SECTION LOOKING NORTH - C.C.F.
SCALE: 1/8" = 1'-0"

1 WEST ELEVATION - C.C.F.
SCALE: 1/8" = 1'-0"

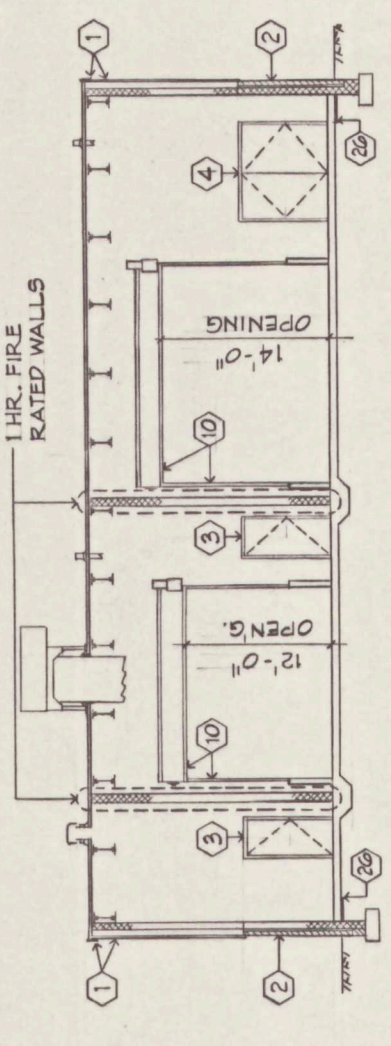


2 EAST ELEVATION - C.C.F.
SCALE: 1/8" = 1'-0"

3 SOUTH ELEVATION - C.C.F.
SCALE: 1/8" = 1'-0"



4 NORTH ELEVATION - C.C.F.
SCALE: 1/8" = 1'-0"

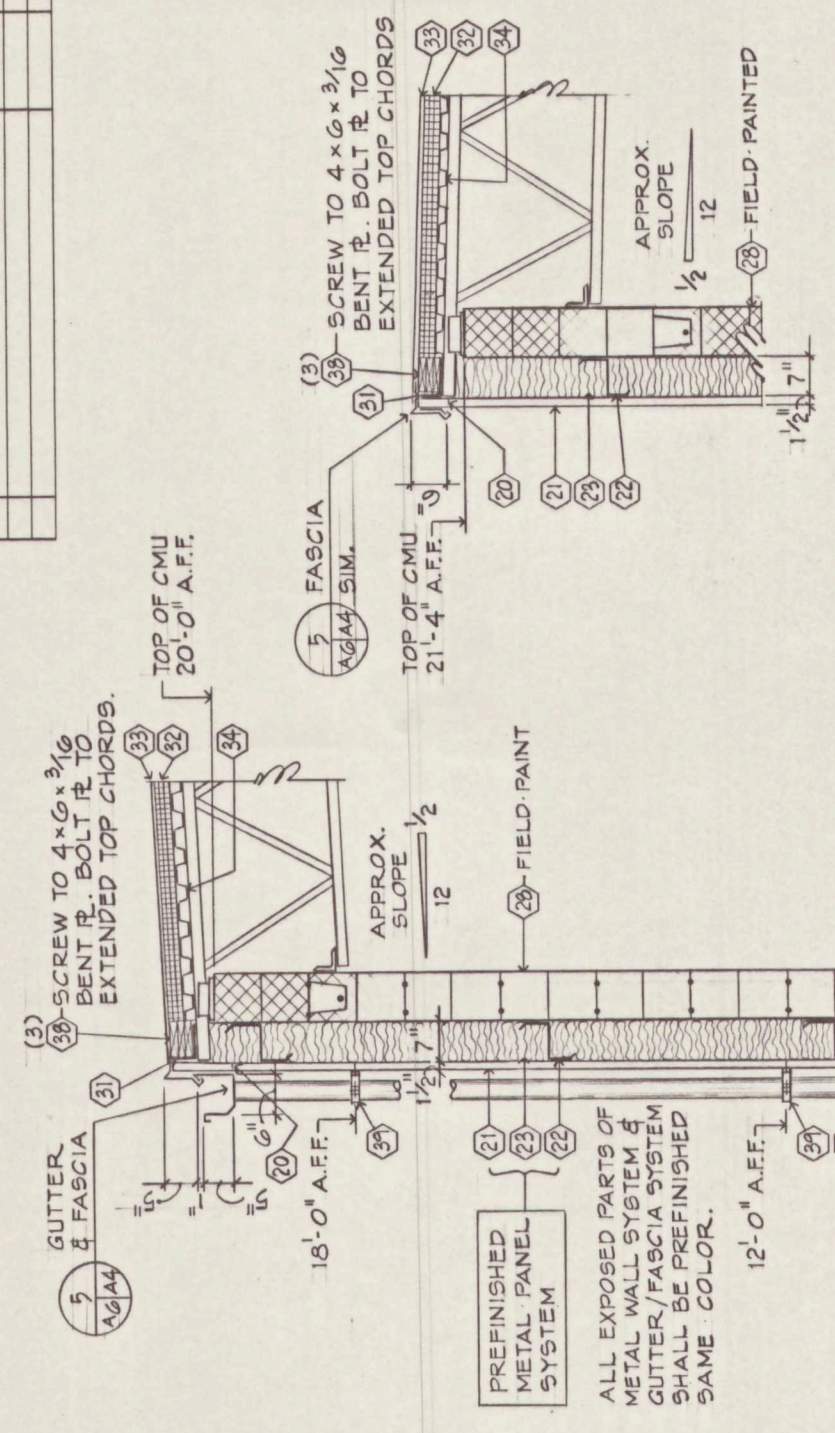


ELEVATION & BLDG SECTION KEYNOTES

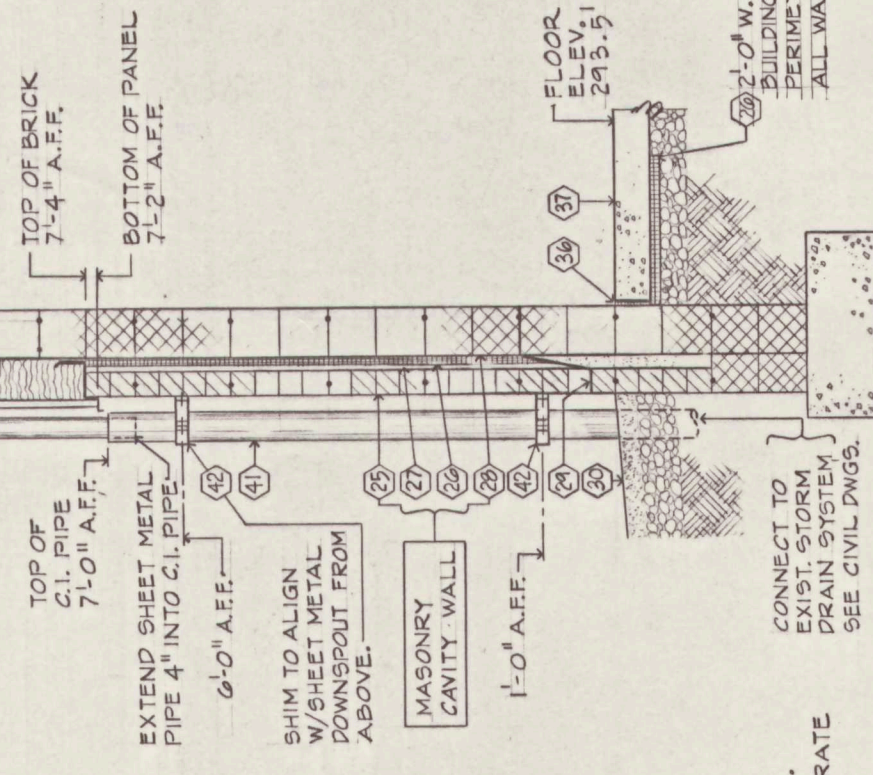
- 1 METAL SIDING & TRIM, PREFINISHED
- 2 BRICK VENEER
- 3 STEEL DOOR & FRAME, FIELD PAINTED
- 4 PAIR, STEEL DOORS & FRAME, FIELD PAINTED
- 5 3 1/2" φ SHEET METAL RWC, PREFIN.
- 6 4" φ C.I. RWC, FIELD PAINTED
- 7 METAL GUTTER, PREFINISHED
- 8 LIGHT FIXTURE
- 9 LOUVERS, PREFINISHED
- 10 OVERHEAD DOOR & FRAME
- 11 CONTROL JOINT
- 12 CAGED LADDER, SEE STRUCT. DWGS.
- 13 STACKS, SEE MECH. DRAWINGS.
- 14 EXHAUST FANS, SEE MECH. DWGS.
- 15 AIR HANDLING UNIT, SEE MECH. DWGS.
- 16 BOLLARD, FIELD PAINTED.

WALL SECTION KEYNOTES

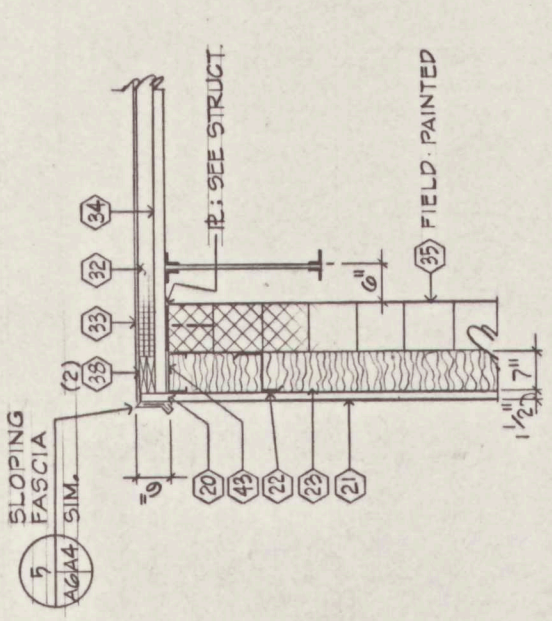
- 20 PANEL SYSTEM NOTCHED CLOSURE
- 21 1 1/2" OUTER PANEL - 22 GA.
- 22 SUBGIRTS @ 4'-0" O.C. MAX. 12 GA. ZEE'S OR CEES.
- 23 6 1/2" FIBERGLASS BATTS - R=19 IMPALE - FASTEN TO CMU
- 24 PANEL SYSTEM SUB-GIRT CLOSURE.
- 25 4x4x12 UTILITY FACEBRICK (3 5/8")
- 26 1 1/2" EXTRUDED POLYSTYRENE RIGID INSULATION R=7.5.
- 27 2 3/4" CAVITY, 1 1/4" AIR SPACE.
- 28 8" LOAD BEARING CMU, SEE STRUCT. DWGS.
- 29 CONTINUOUS FLASHING, WEEP HOLE INSERTS @ 24".
- 30 SEE CIVIL DWGS. FOR ELEVATION @ FINISH GRADE.
- 31 BENT R, SEE STRUCT. DWGS.
- 32 2 1/2" RIGID POLY-ISOCYANURATE INSULATION, R=20.8.
- 33 SINGLE-PLY ROOFING
- 34 1 1/2" STEEL DECK ON K-SERIES STEEL JOISTS SEE STRUCTURAL DWGS.
- 35 8" NON-BEARING CMU, SEE STRUCT. DWGS.
- 36 1/2" x 6" PREMOULDED JT. FILLER x 1/2" x 1/4" CAULK - SEE STRUCT.
- 37 REINF. CONC. SLAB, VAPOR BARRIER & FILL - SEE STRUCTURAL DWGS.
- 38 TREATED WOOD NAILERS
- 39 1/2" x 1" GALV. HANGER, PREFIN.
- 40 3 1/2" φ, 26 GA. GALV. DOWNSPOUT, PREFIN.
- 41 1" φ C.I. DOWNSPOUT, FIELD PAINTED.
- 42 STEEL OFFSET PIPE CLAMP, FIELD PAINTED.



5 SECTION @ HIGH BEARING WALL
SCALE: 3/4" = 1'-0"



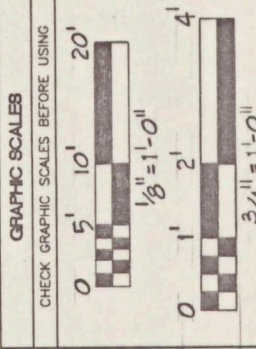
6 SECTION @ LOW BEARING WALL
SCALE: 3/4" = 1'-0"



7 TYP. SECTION @ NON BEARING WALL
SCALE: 3/4" = 1'-0"

CONTINUED WALL SECTION KEYNOTES

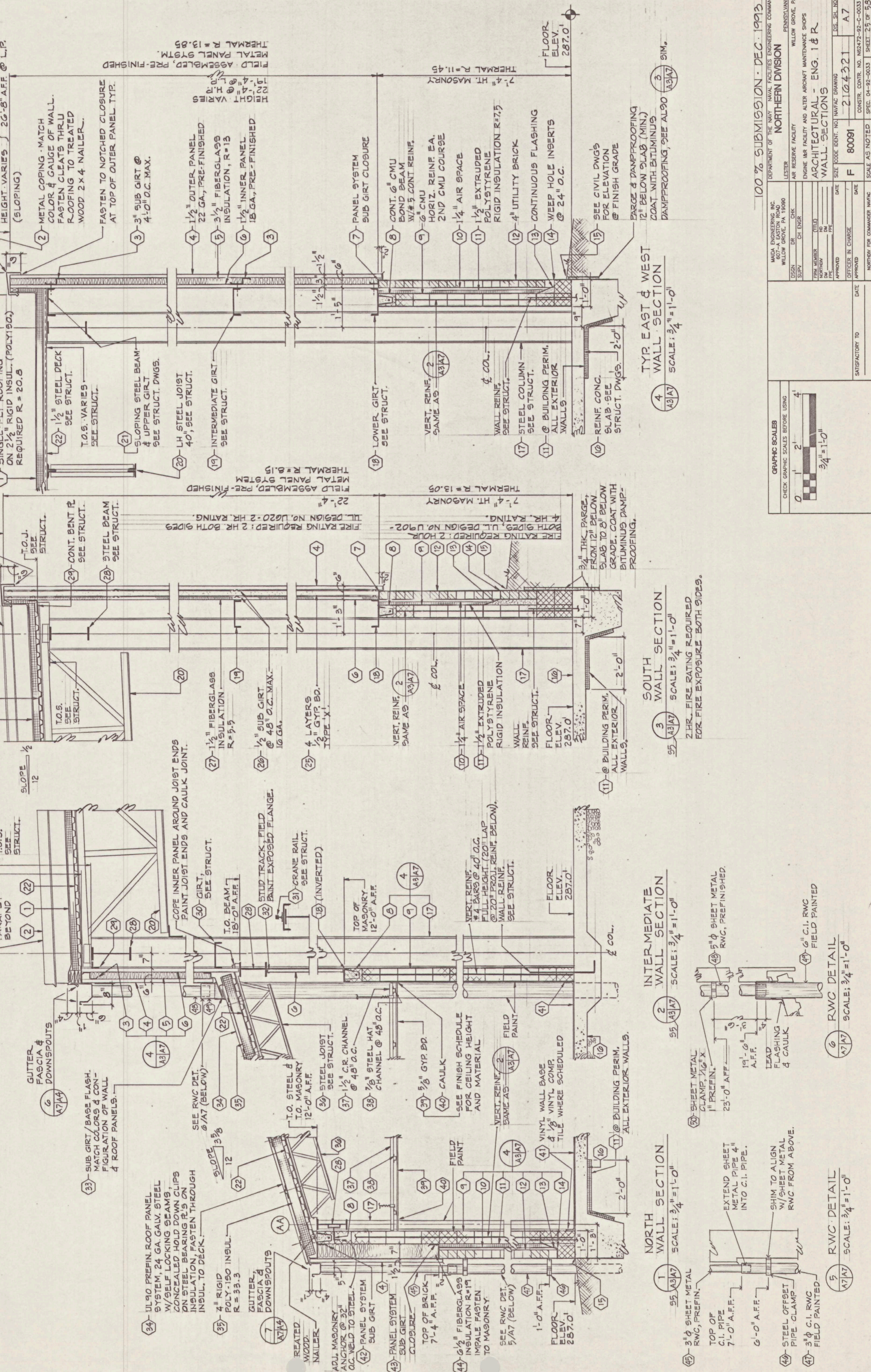
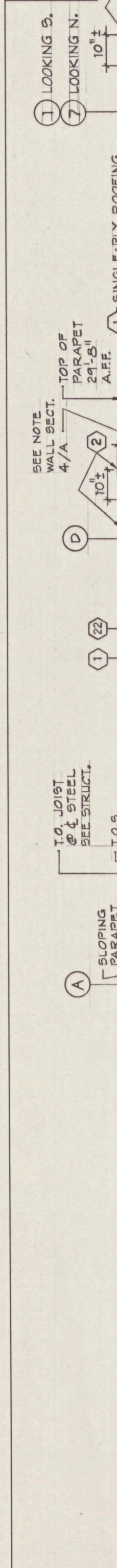
43 SLOPING SUBGIRT TOP CLOSURE.



100% SUBMISSION - DEC. 1993

MADA ENGINEERING INC. 607-A EASTON ROAD WILLOW GROVE, PA 19150	DEPARTMENT OF THE NAVY - NAVAL FACILITIES ENGINEERING COMMAND NORTHERN DIVISION
LESTER ENGINE I&B FACILITY AND ALTER AIRCRAFT MAINTENANCE SHOPS WILLOW GROVE, PA	
DESIGN: RCP DR JCB CHK RYM SUPV: RLM CH ENGR LAG	
TITLE: ARCHITECTURAL - C.C.F. EXTERIOR ELEVATIONS & SECTIONS	
DATE: 2104320	DIS. SHL NO. A6
OFFICER IN CHARGE: F 80091	
APPROVED: _____	DATE: _____
SATISFACTORY TO: _____	
SCALE AS NOTED	
CONSTR. CONTR. NO. N62472-92-C-0033	
SHEET 24 OF 28	

REVISIONS	DESCRIPTION	PREP'D	DATE	APPROVED
LTR				



100% SUBMISSION - DEC. 1993

DEPARTMENT OF THE NAVY NAVAL FACILITIES ENGINEERING COMMAND
NORTHERN DIVISION
AIR RESERVE FACILITY
WILLOW GROVE, PA

MUDA ENGINEERING, INC.
807-A EASTON ROAD
WILLOW GROVE, PA 19080

DESIGN: DR. CHK. SUPV. CH. ENGR.
PROJECT NO. 100000000
DATE: 11/15/93
SCALE: AS NOTED

ENGINE 18R FACILITY AND ALTER AIRCRAFT MAINTENANCE SHOPS
ARCHITECTURAL - ENG. 1 & R
WALL SECTIONS

DATE: 11/15/93
SCALE: AS NOTED

CONSTR. CONTR. NO. NS472-92-C-0033
SHEET 25 OF 53

GRAPHIC SCALES

CHECK GRAPHIC SCALES BEFORE USING

0 1 2 4
3/4" = 1'-0"

SATISFACTORY TO DATE

OFFICER IN CHARGE DATE

APPROVED

NORTH DIVISION

DATE

REVISIONS

DESCRIPTION

PREP'D

DATE

APPROVED

100% SUBMISSION - DEC. 1993

DEPARTMENT OF THE NAVY NAVAL FACILITIES ENGINEERING COMMAND
NORTHERN DIVISION
AIR RESERVE FACILITY
WILLOW GROVE, PA

MUDA ENGINEERING, INC.
807-A EASTON ROAD
WILLOW GROVE, PA 19080

DESIGN: DR. CHK. SUPV. CH. ENGR.
PROJECT NO. 100000000
DATE: 11/15/93
SCALE: AS NOTED

ENGINE 18R FACILITY AND ALTER AIRCRAFT MAINTENANCE SHOPS
ARCHITECTURAL - ENG. 1 & R
WALL SECTIONS

DATE: 11/15/93
SCALE: AS NOTED

CONSTR. CONTR. NO. NS472-92-C-0033
SHEET 25 OF 53

GRAPHIC SCALES

CHECK GRAPHIC SCALES BEFORE USING

0 1 2 4
3/4" = 1'-0"

SATISFACTORY TO DATE

OFFICER IN CHARGE DATE

APPROVED

NORTH DIVISION

DATE

REVISIONS

DESCRIPTION

PREP'D

DATE

APPROVED

100% SUBMISSION - DEC. 1993

DEPARTMENT OF THE NAVY NAVAL FACILITIES ENGINEERING COMMAND
NORTHERN DIVISION
AIR RESERVE FACILITY
WILLOW GROVE, PA

MUDA ENGINEERING, INC.
807-A EASTON ROAD
WILLOW GROVE, PA 19080

DESIGN: DR. CHK. SUPV. CH. ENGR.
PROJECT NO. 100000000
DATE: 11/15/93
SCALE: AS NOTED

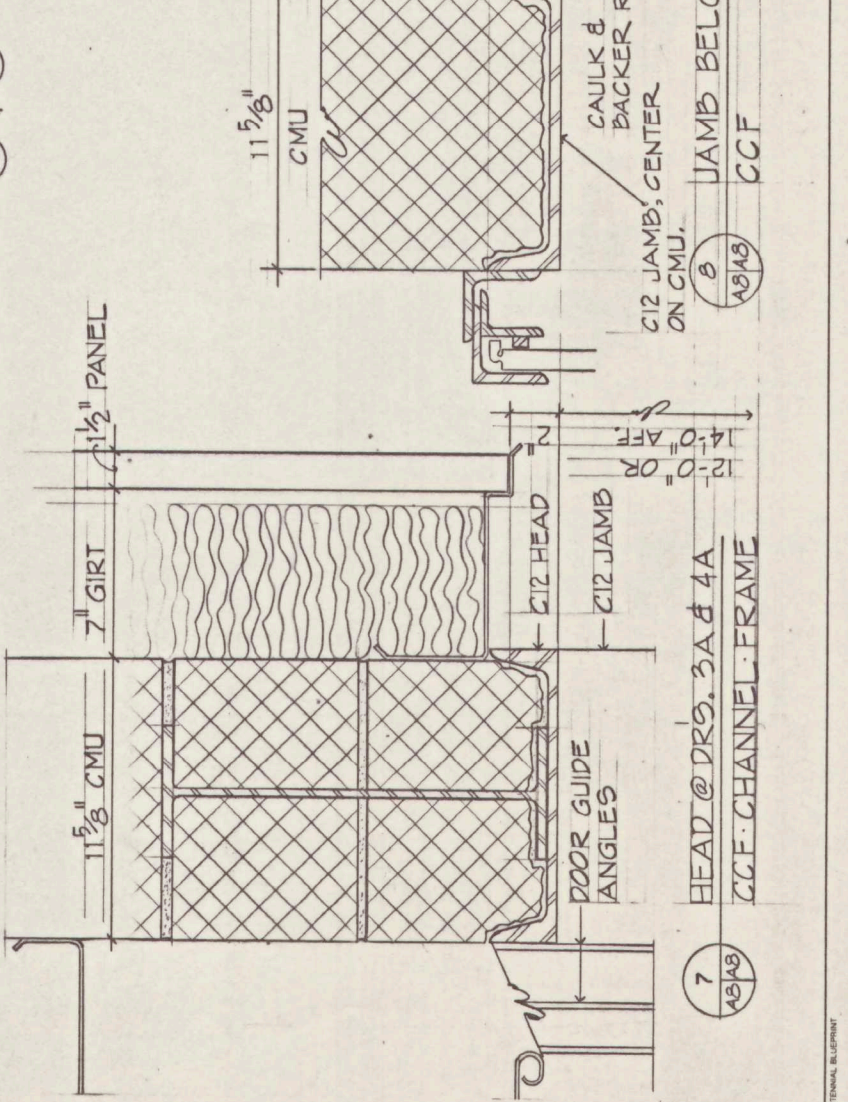
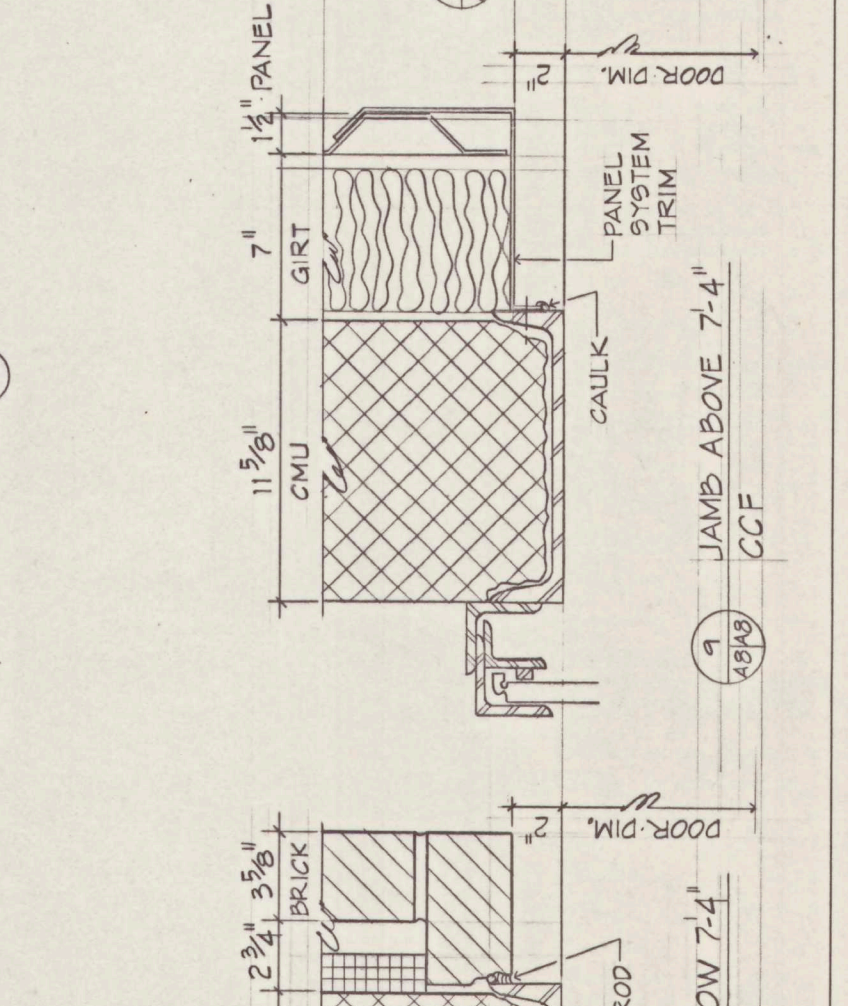
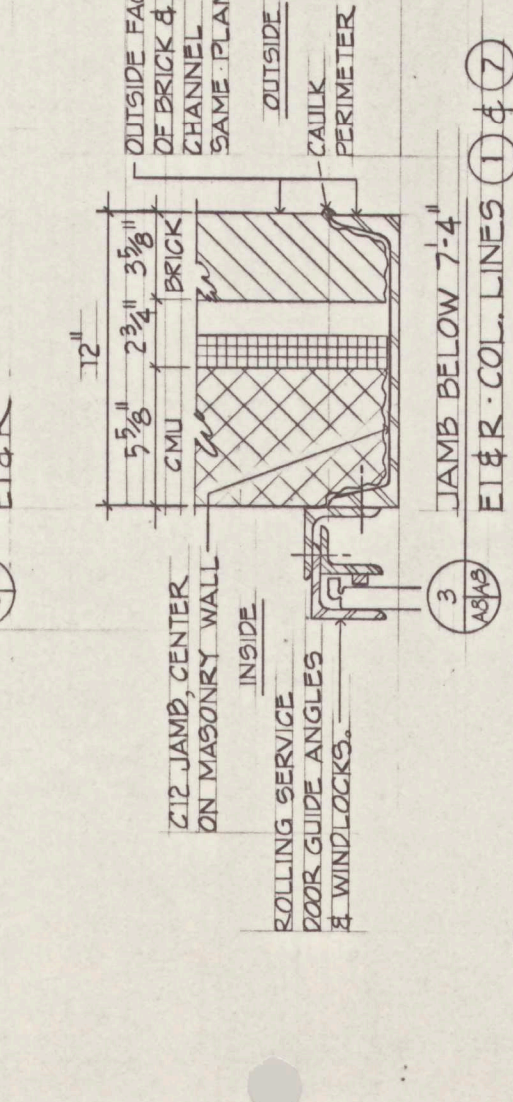
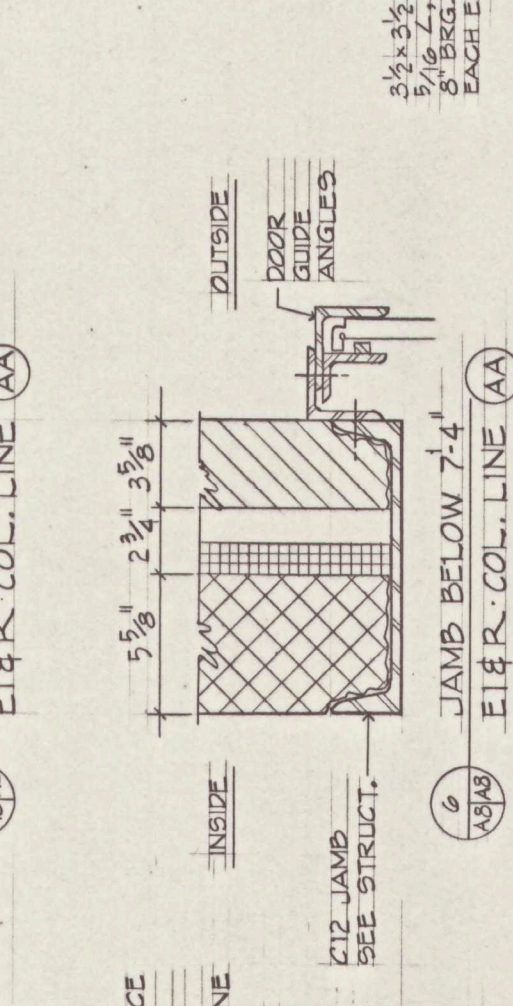
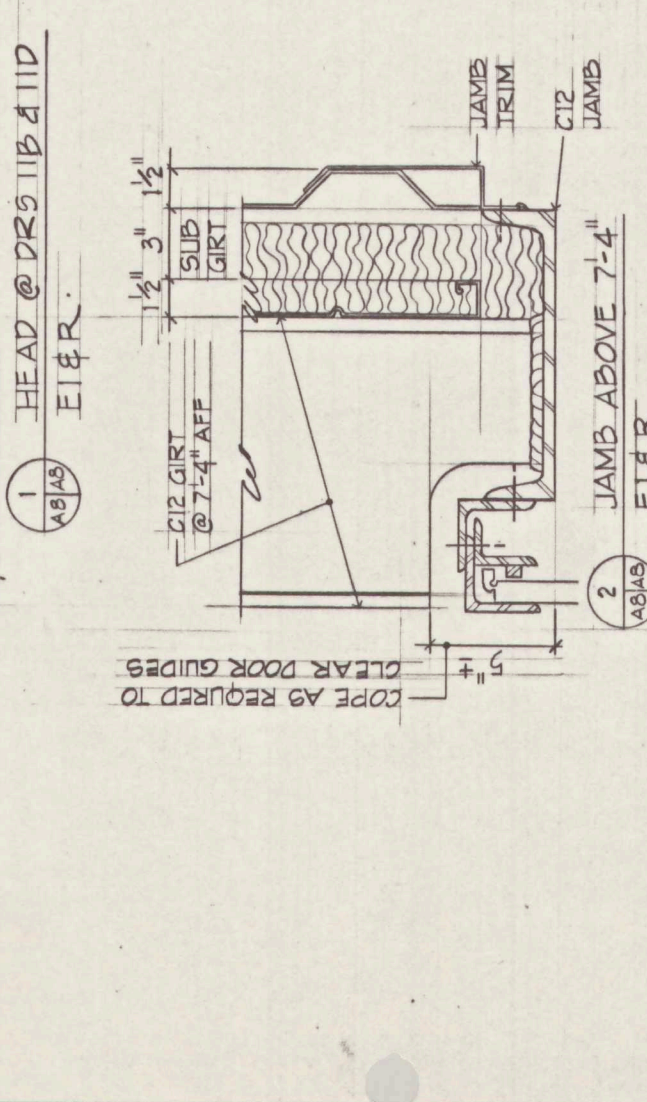
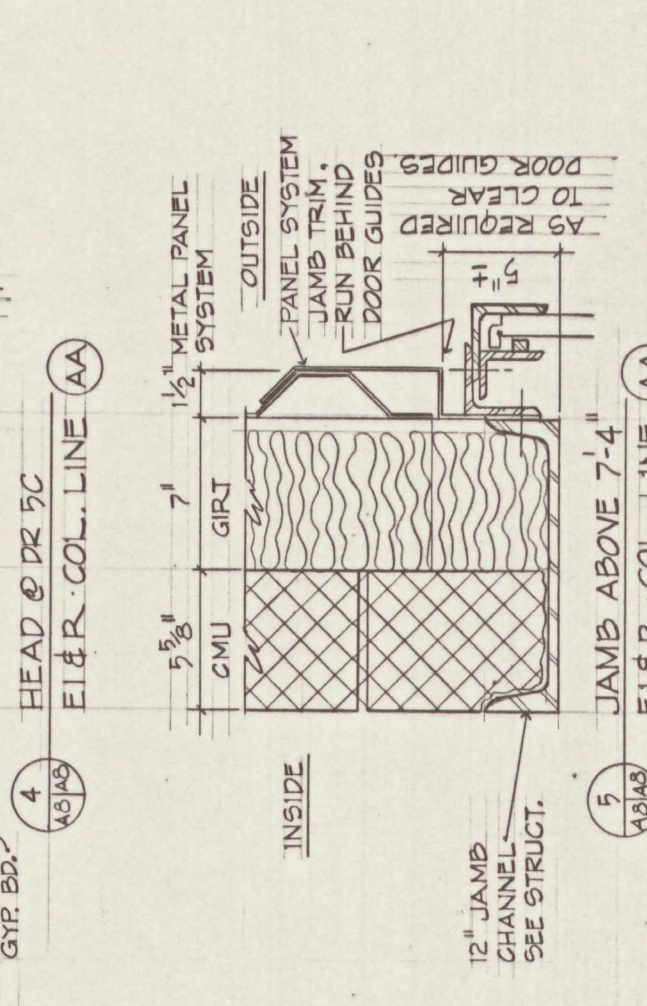
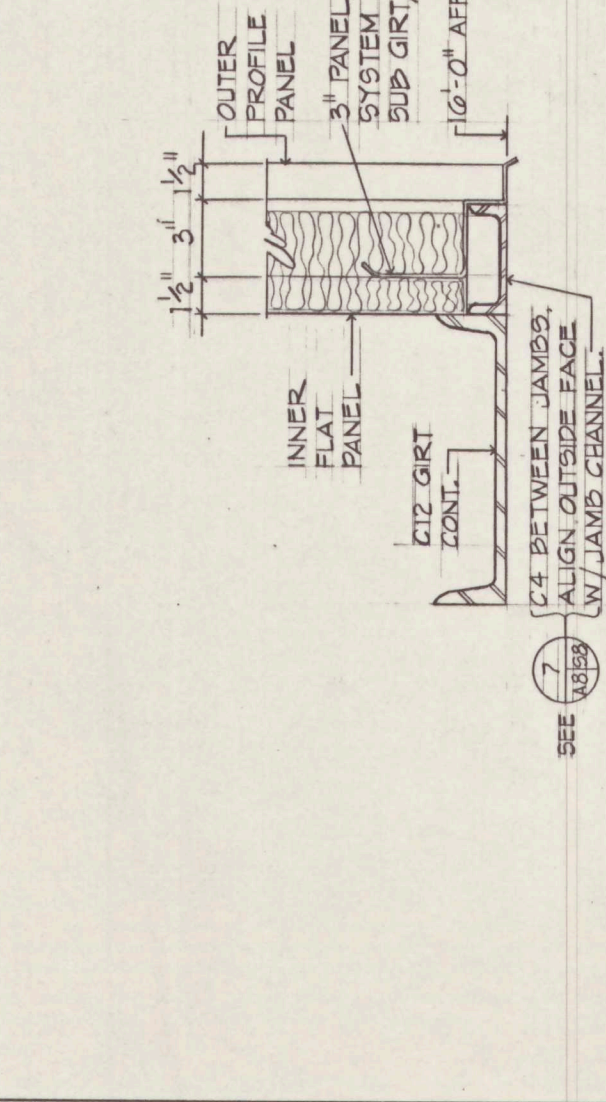
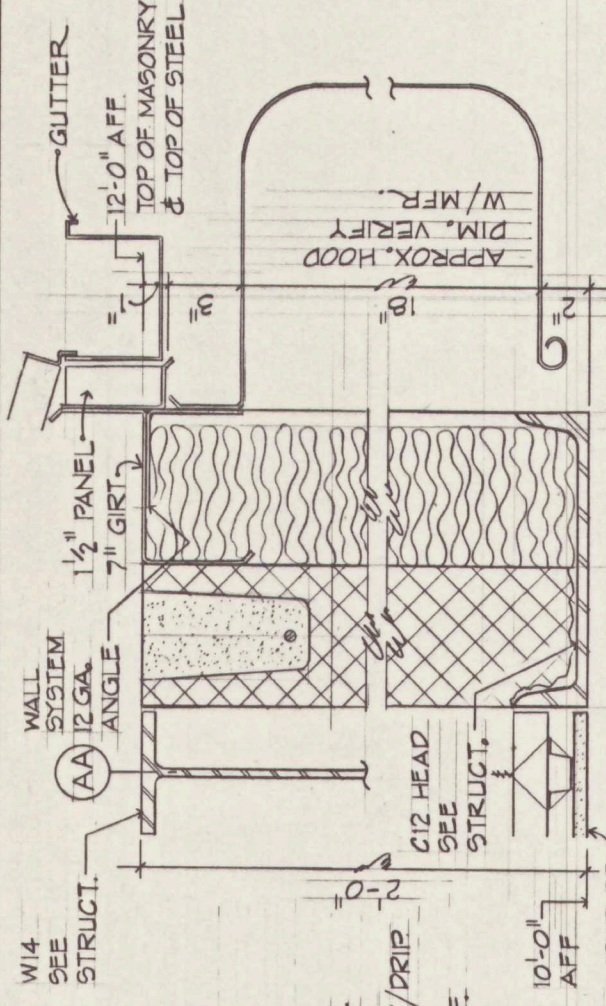
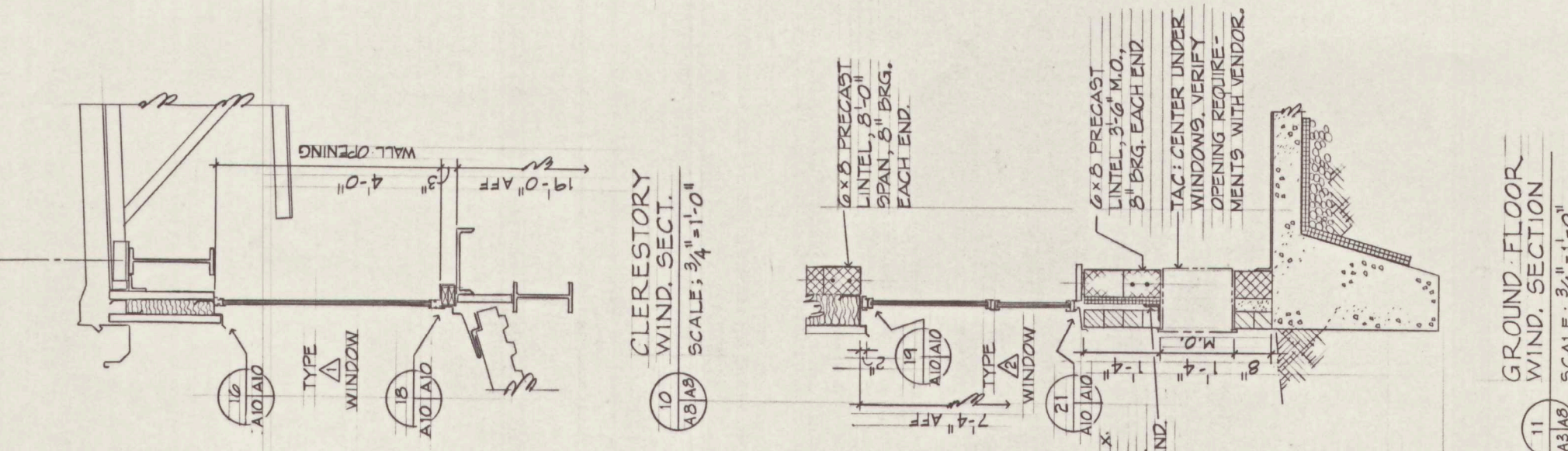
ENGINE 18R FACILITY AND ALTER AIRCRAFT MAINTENANCE SHOPS
ARCHITECTURAL - ENG. 1 & R
WALL SECTIONS

DATE: 11/15/93
SCALE: AS NOTED

CONSTR. CONTR. NO. NS472-92-C-0033
SHEET 25 OF 53

REVISIONS	DESCRIPTION	PREP'D	DATE	APPROVED
LTR				

1 LOOKING NORTH
 7 LOOKING SOUTH



GABLE END WALL SECTION
 SCALE: 3/4" = 1'-0"

12 AS/AS

GROUND FLOOR WIND. SECTION
 SCALE: 3/4" = 1'-0"

11 AS/AS

JAMB ABOVE 7'-4"
 9 AS/AS CCF

JAMB BELOW 7'-4"
 8 AS/AS CCF

JAMB BELOW 7'-4"
 7 AS/AS CCF

MADA ENGINEERING INC. WILLOW GROVE, PA 19090		DEPARTMENT OF THE NAVY - NAVAL FACILITIES ENGINEERING COMMAND	
LESTER		NORTHERN DIVISION	
ESSON, BUCKLEY, JONES, GIBLIN, SMITH, WILSON, HOKI, CHENG, HERR, LAG		AIR RESERVE FACILITY	
ARCHITECTURAL - ENG. I & R		WILLOW GROVE, PA	
DATE		DATE	
APPROVED		APPROVED	
OFFICER IN CHARGE		OFFICER IN CHARGE	
DATE		DATE	
CONSTR. CONTR. NO. 80091		CONSTR. CONTR. NO. 80091	
SCALE		SCALE	
SHEET 26 OF 58		SHEET 26 OF 58	

GRAPHIC SCALES CHECK GRAPHIC SCALES BEFORE USING		GRAPHIC SCALES	
0 1 2 3 4	0 1 2 3 4	0 1 2 3 4	0 1 2 3 4
3/4" = 1'-0"	3/4" = 1'-0"	3/4" = 1'-0"	3/4" = 1'-0"

100% SUBMISSION - DEC. 1993		100% SUBMISSION - DEC. 1993	
PENNSYLVANIA		PENNSYLVANIA	
WILLOW GROVE, PA		WILLOW GROVE, PA	
ARCHITECTURAL - ENG. I & R		ARCHITECTURAL - ENG. I & R	
DATE		DATE	
APPROVED		APPROVED	
OFFICER IN CHARGE		OFFICER IN CHARGE	
DATE		DATE	
CONSTR. CONTR. NO. 80091		CONSTR. CONTR. NO. 80091	
SCALE		SCALE	
SHEET 26 OF 58		SHEET 26 OF 58	

MADA ENGINEERING INC. WILLOW GROVE, PA 19090		DEPARTMENT OF THE NAVY - NAVAL FACILITIES ENGINEERING COMMAND	
LESTER		NORTHERN DIVISION	
ESSON, BUCKLEY, JONES, GIBLIN, SMITH, WILSON, HOKI, CHENG, HERR, LAG		AIR RESERVE FACILITY	
ARCHITECTURAL - ENG. I & R		WILLOW GROVE, PA	
DATE		DATE	
APPROVED		APPROVED	
OFFICER IN CHARGE		OFFICER IN CHARGE	
DATE		DATE	
CONSTR. CONTR. NO. 80091		CONSTR. CONTR. NO. 80091	
SCALE		SCALE	
SHEET 26 OF 58		SHEET 26 OF 58	

REVISED	DESCRIPTION	PREP'D	DATE	APPROVED

BLDG.	OPG. NO.	DOORS OR VISION PANELS	FRAMES	DETAILS THIS SHEET	HPM. SET	NOTES	
E.I.R.	1A	3'-0" x 7'-0" x 1/4"	16 GA. STEEL	2 3	⑧		
	1B	PR-3'-0" x 7'-0" x 1/4"	16 GA. STEEL	5 6 7 8 10	②	1 2 7	
	2A	3'-0" x 7'-0" x 1/4"	16 GA. STEEL	2 3 4	③	3 11	
	3A	3'-0" x 7'-0" x 1/4"	16 GA. STEEL	2 3 4	③	3 11	
	4A	PR-3'-0" x 7'-0" x 1/4"	16 GA. STEEL	2 3	④	4	
	5A	3'-0" x 7'-0" x 1/4"	16 GA. STEEL	2 3	①	5	
	5B	8'-0" x 10'-0" x 3/8"	STRUCT. C	PTD			
	5C	8'-0" x 10'-0" x 3/8"	STRUCT. G	PTD			
	6A	3'-0" x 7'-0" x 1/4"	16 GA. STEEL	PTD	2 3	①	5
	7A	3'-0" x 7'-0" x 1/4"	16 GA. STEEL	PTD	2 3	②	5
	7B	4'-0" x 4'-0"					
	8A	3'-0" x 7'-0" x 1/4"	16 GA. STEEL	PTD	2 3	⑤	
8B	3'-0" x 7'-0" x 1/4"	16 GA. STEEL	PTD	2 3	⑤		
8C	3'-0" x 7'-0" x 1/4"	16 GA. STEEL	PTD	1	⑥		
8D	4'-0" x 4'-0"						
9A	3'-0" x 7'-0" x 1/4"	16 GA. STEEL	PTD	2 3	⑤		
9B	3'-0" x 7'-0" x 1/4"	16 GA. STEEL	PTD	5 8 10	⑦	1	
9C	3'-0" x 7'-0" x 1/4"	16 GA. STEEL	PTD	1	⑨		
9D	2'-6" x 7'-0" x 1/4"	16 GA. STEEL	PTD	1	⑧		
9E	4'-0" x 4'-0"						
10A	3'-0" x 7'-0" x 1/4"	16 GA. STEEL	PTD	2 3	⑤		
10B	2'-6" x 7'-0" x 1/4"	16 GA. STEEL	PTD	2 3	⑤		
10C	4'-0" x 4'-0"						
11A	3'-0" x 7'-0" x 1/4"	16 GA. STEEL	PTD	8 9 10	⑦	1	
11B	10'-0" x 10'-0" x 3/8"	GALV. INSUL.	STRUCT. C	PTD		5	
11C	3'-0" x 7'-0" x 1/4"	16 GA. STEEL	PTD	8 9 10	⑦	1	
11D	10'-0" x 10'-0" x 3/8"	GALV. INSUL.	STRUCT. G	PTD		5	
12A	3'-0" x 7'-0" x 1/4"	16 GA. STEEL	PTD	1	⑨		

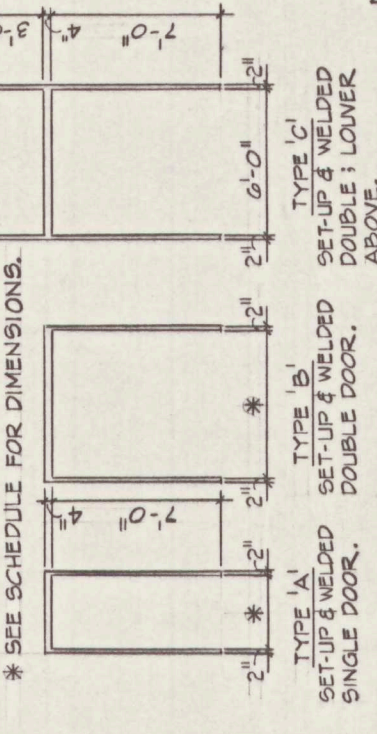
DOOR SCHEDULE - ABBREVIATIONS

- GRADE II HEAVY DUTY HOLLOW STEEL, 18 GAUGE FACES.
- GRADE III EXTRA HEAVY DUTY HOLLOW STEEL, 16 GA. FACES.
- PTD FIELD PAINTED.
- FIN FINISH
- GA. GAUGE
- GALV GALVANIZED STEEL.
- INSUL INSULATED
- (E) EXISTING
- (N) NEW
- EXPAN. ANCHOR
- 3/8" Ø FLAT-HEAD MACH. SCREW
- JAMB (EXISTING CMU WALL)
- GROUT FILL FRAME
- SET-UP & WELDED STEEL FRAME CENTER ON CMU WALL.
- ZINK COATED DOORS & FRAMES.
- WALL LOUVER SPEC. SECTION 102013 PREFIN.
- DOOR LOUVER 24" x 18".
- SHELF 2'-1" x 5'-8" EACH LEAF.
- STRUCTURAL CHANNEL FRAME - SEE DWG. AB.
- 1/4" SAFETY GLASS.
- ASTRAGAL ON ACTIVE LEAF.
- SPEC. SECTION 08710 FOR HARDWARE SETS.
- COMPLETED-OPENING ANCHORS, (N) OPG. CUT IN (E) MASONRY.
- (E) MASONRY OPENING INSIDE BUILDING.
- MARBLE THRESHOLD.

DOOR SCHEDULE NOTES

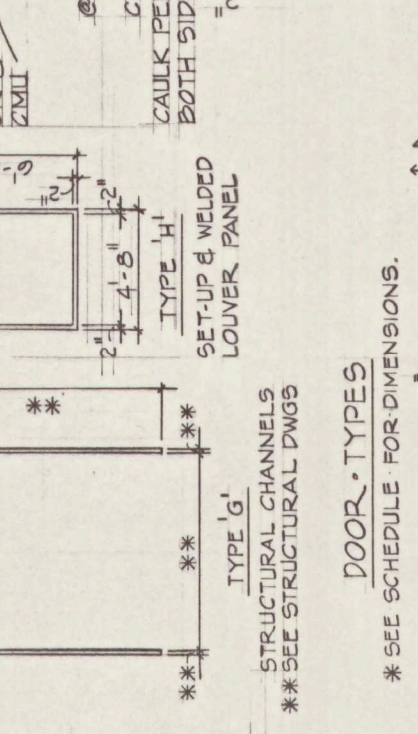
- ZINK COATED DOORS & FRAMES.
- WALL LOUVER SPEC. SECTION 102013 PREFIN.
- DOOR LOUVER 24" x 18".
- SHELF 2'-1" x 5'-8" EACH LEAF.
- STRUCTURAL CHANNEL FRAME - SEE DWG. AB.
- 1/4" SAFETY GLASS.
- ASTRAGAL ON ACTIVE LEAF.
- SPEC. SECTION 08710 FOR HARDWARE SETS.
- COMPLETED-OPENING ANCHORS, (N) OPG. CUT IN (E) MASONRY.
- (E) MASONRY OPENING INSIDE BUILDING.
- MARBLE THRESHOLD.

FRAME TYPES



- TYPE A SET-UP & WELDED SINGLE DOOR.
- TYPE B SET-UP & WELDED DOUBLE DOOR.
- TYPE C SET-UP & WELDED DOUBLE ABOVE.
- TYPE D KNOCKDOWN DRYWALL TYPE VISION PANEL.
- TYPE E SET-UP & WELDED VISION PANEL.
- TYPE F SET-UP & WELDED DOUBLE VISION PANEL.
- TYPE G SET-UP & WELDED LOUVER PANEL.
- TYPE H SET-UP & WELDED LOUVER PANEL.
- TYPE I SET-UP & WELDED LOUVER PANEL.
- TYPE J SET-UP & WELDED LOUVER PANEL.
- TYPE K SET-UP & WELDED LOUVER PANEL.

DOOR TYPES



- TYPE A SET-UP & WELDED SINGLE DOOR.
- TYPE B SET-UP & WELDED DOUBLE DOOR.
- TYPE C SET-UP & WELDED DOUBLE ABOVE.
- TYPE D KNOCKDOWN DRYWALL TYPE VISION PANEL.
- TYPE E SET-UP & WELDED VISION PANEL.
- TYPE F SET-UP & WELDED DOUBLE VISION PANEL.
- TYPE G SET-UP & WELDED LOUVER PANEL.
- TYPE H SET-UP & WELDED LOUVER PANEL.
- TYPE I SET-UP & WELDED LOUVER PANEL.
- TYPE J SET-UP & WELDED LOUVER PANEL.
- TYPE K SET-UP & WELDED LOUVER PANEL.

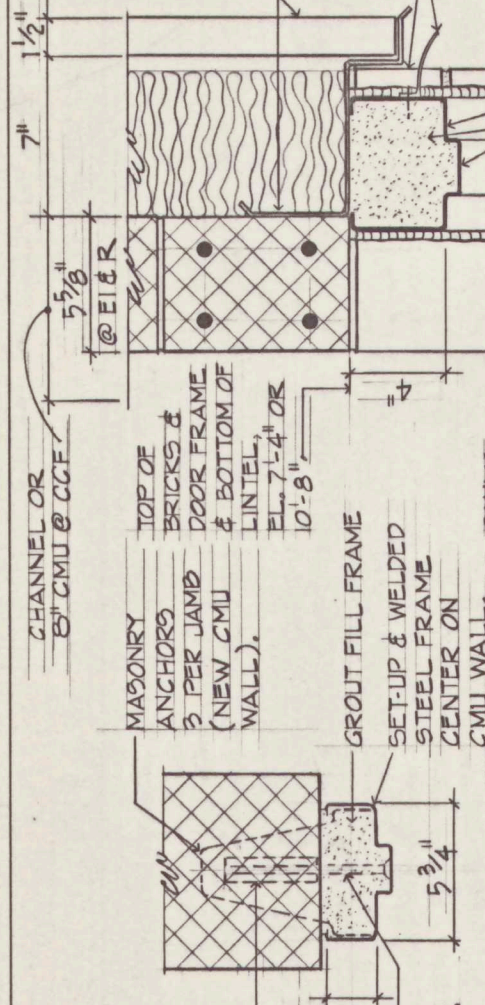
BLDG.	OPG. NO.	DOORS OR VISION PANELS	FRAMES	DETAILS THIS SHEET	HPM. SET	NOTES	
C.C.F.	1A	3'-0" x 7'-0" x 1/4"	16 GA. STEEL	5 8 10	⑦	1	
	2A	4'-0" x 7'-0" x 1/4"	16 GA. STEEL	5 8 10	⑩	1	
	2B	4'-8" x 6'-8"					
	3A	10'-0" x 12'-0" x 3/8"	GALV. INSUL.	STRUCT. C	PTD		
	3B	3'-0" x 7'-0" x 1/4"	16 GA. STEEL	PTD	5 8 10	⑦	1
	4A	18'-0" x 14'-0" x 3/8"	GALV. INSUL.	STRUCT. G	PTD		
	4B	PR-4'-0" x 7'-0" x 1/4"	16 GA. STEEL	PTD	5 8 10	⑩	1 5 7
	1B	2'-0" x 2'-0"					

DOOR SCHEDULE - CORROSION CONTROL FACILITY

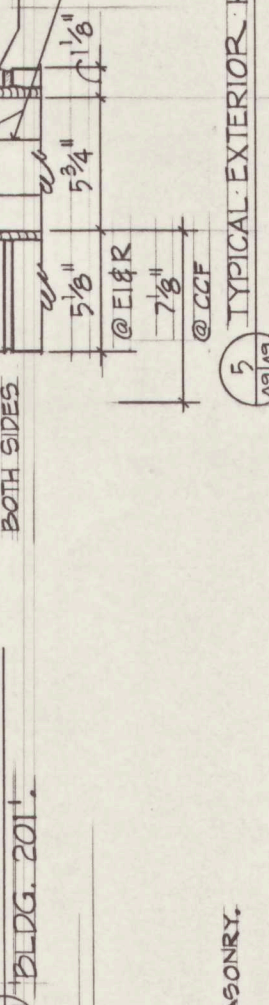
BLDG.	OPG. NO.	DOORS OR VISION PANELS	FRAMES	DETAILS THIS SHEET	HPM. SET	NOTES	
201	4A	3'-0" x 7'-0" x 1/4"	16 GA. STEEL	3 11	⑤	9	
	7A	3'-0" x 7'-0" x 1/4"	16 GA. STEEL	3 11	⑤	9	
	17A	10'-0" x 10'-0" x 3/8"	GALV. INSUL.				
	27A	3'-0" x 7'-0" x 1/4"	16 GA. STEEL	3 11	⑤	9	
	27B	12'-0" x 16'-0"	GALV. UN-INSUL.	STRUCT. C	PTD		
	30A	3'-0" x 7'-0" x 1/4"	16 GA. STEEL	PTD	1	③	3 11
	30B	3'-0" x 7'-0" x 1/4"	16 GA. STEEL	PTD	1	③	3 11

DOOR SCHEDULE - BUILDING 201

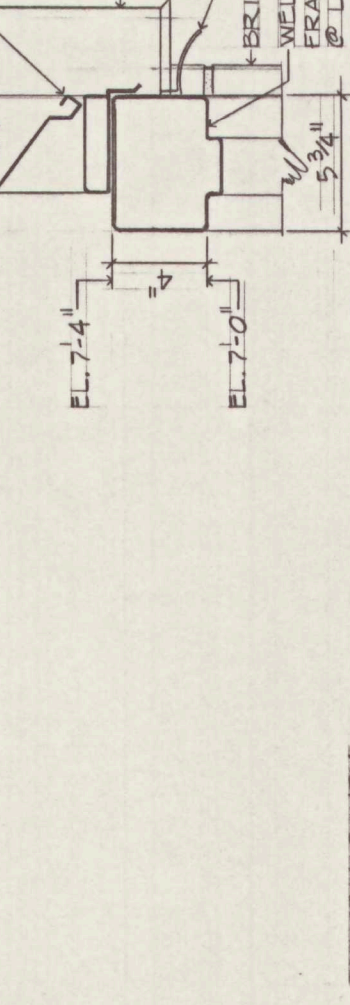
BLDG.	OPG. NO.	DOORS OR VISION PANELS	FRAMES	DETAILS THIS SHEET	HPM. SET	NOTES	
201	4A	3'-0" x 7'-0" x 1/4"	16 GA. STEEL	3 11	⑤	9	
	7A	3'-0" x 7'-0" x 1/4"	16 GA. STEEL	3 11	⑤	9	
	17A	10'-0" x 10'-0" x 3/8"	GALV. INSUL.				
	27A	3'-0" x 7'-0" x 1/4"	16 GA. STEEL	3 11	⑤	9	
	27B	12'-0" x 16'-0"	GALV. UN-INSUL.	STRUCT. C	PTD		
	30A	3'-0" x 7'-0" x 1/4"	16 GA. STEEL	PTD	1	③	3 11
	30B	3'-0" x 7'-0" x 1/4"	16 GA. STEEL	PTD	1	③	3 11



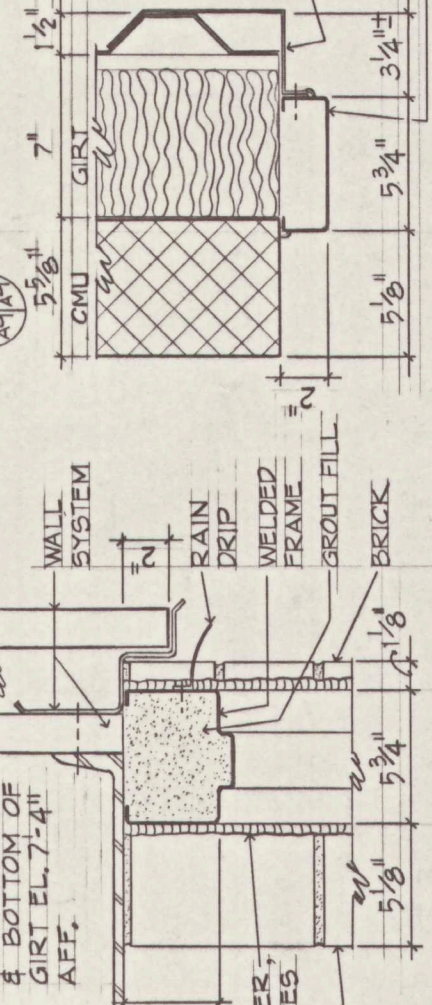
11 TYP. JAMB @ MAS. BLDG. 201.



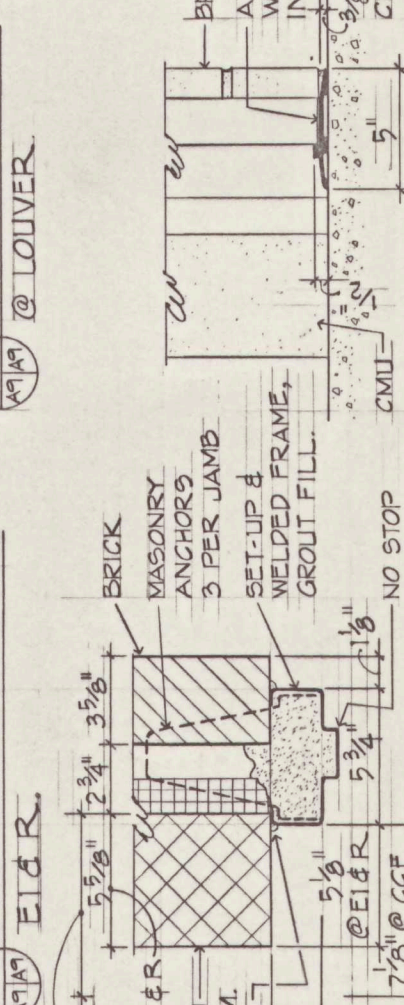
5 TYPICAL EXTERIOR HEAD



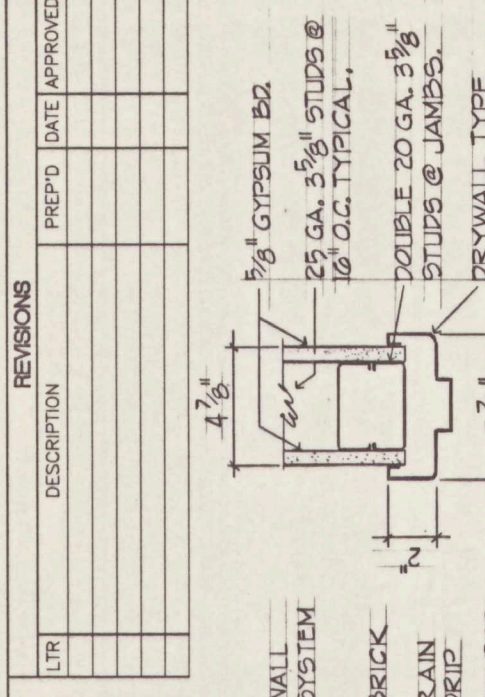
6 TYPICAL EXTERIOR HEAD



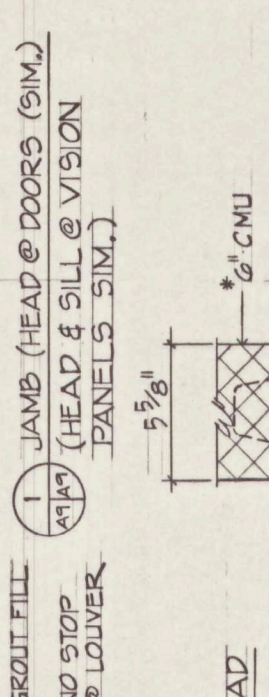
9 HEAD-COL. LINES 1 & 7.



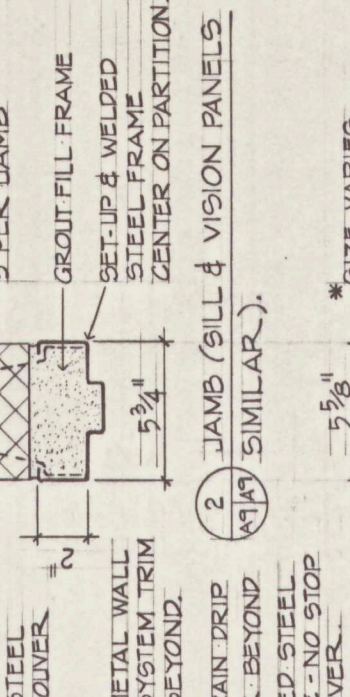
10 JAMB BELOW 7'-4" @ LOUVER E.I.R. & CCF



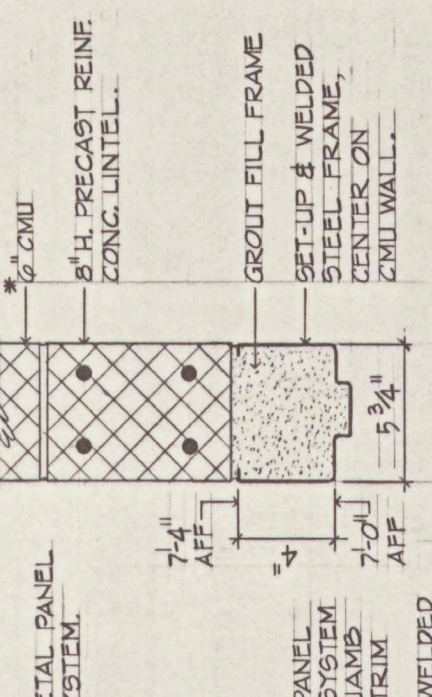
1 JAMB (HEAD @ DOORS (SIM.)) (HEAD & SILL @ VISION PANELS (SIM.))



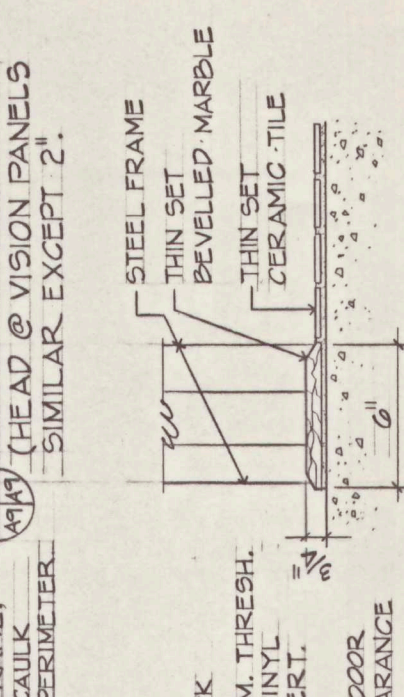
2 JAMB (SILL & VISION PANELS (SIM.))



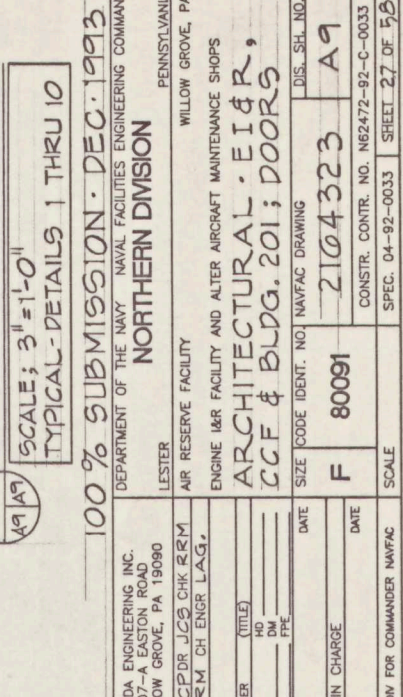
3 HEAD-INTERIOR MASONRY (HEAD @ VISION PANELS (SIM.)) EXCEPT 2.



4 SILL @ CERAMIC TILE

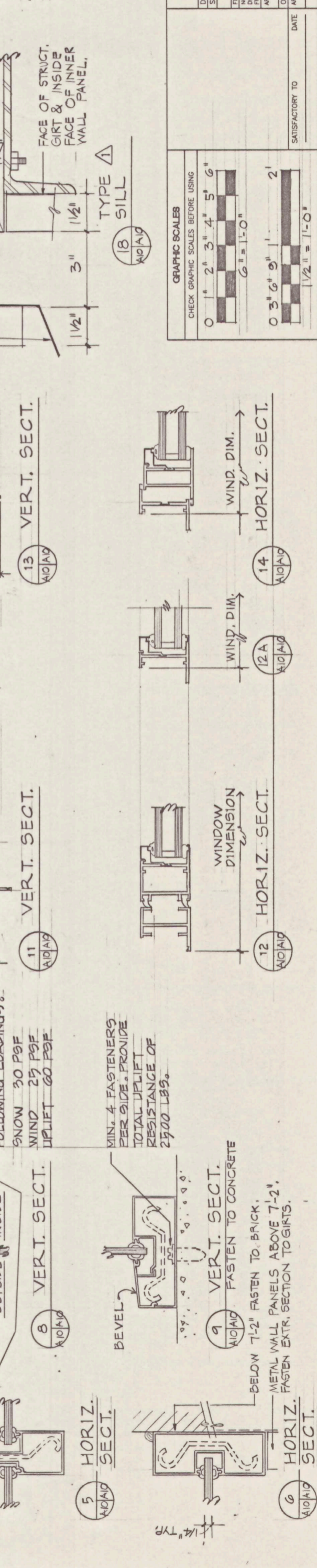
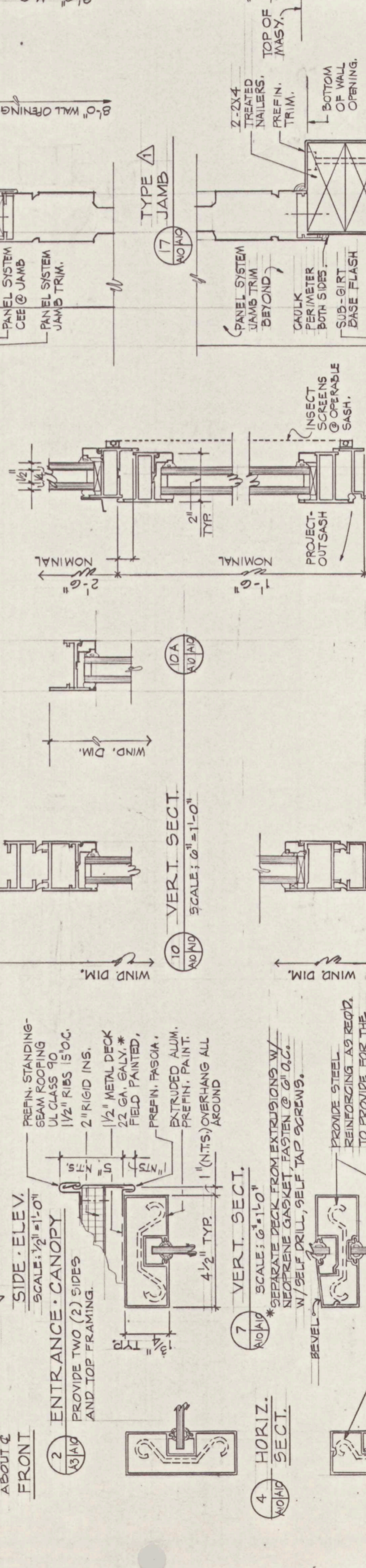
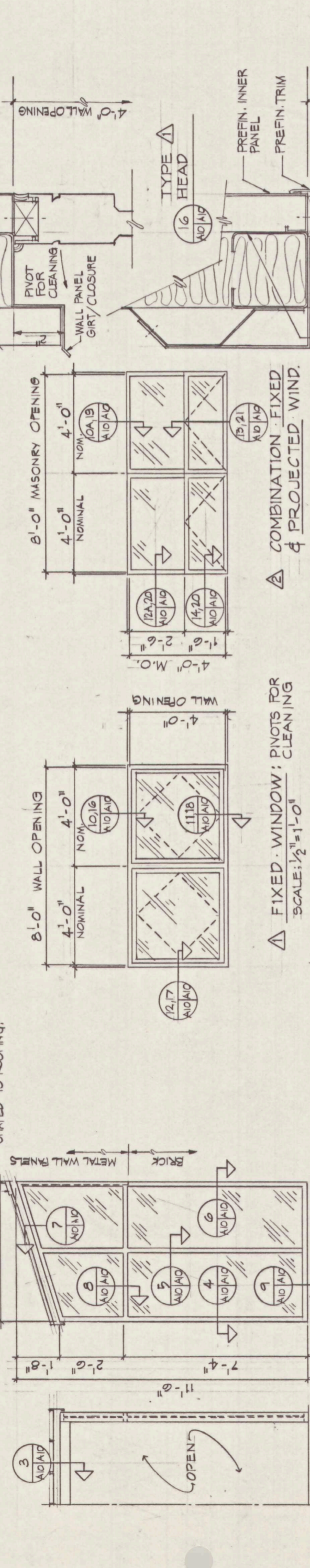
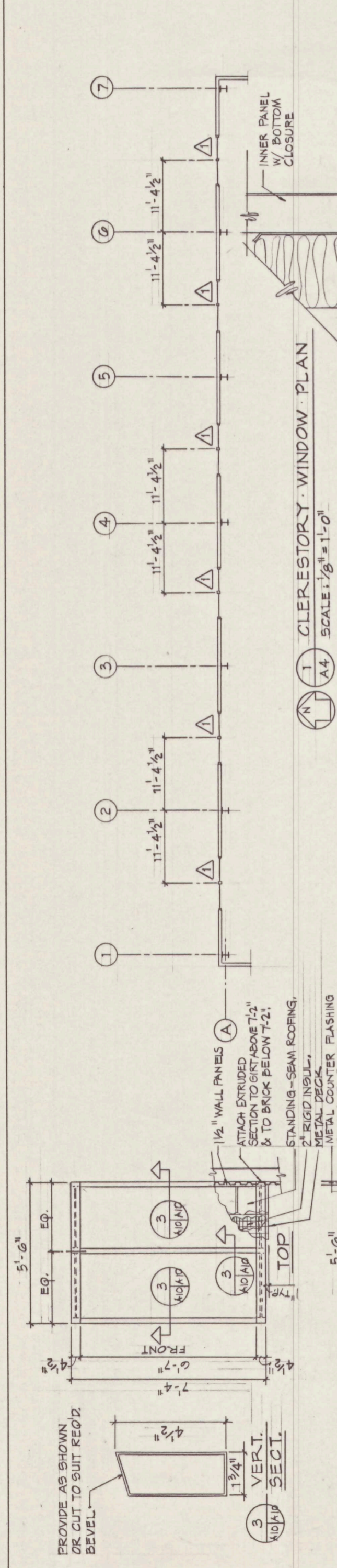


7 JAMB ABOVE 7'-4" @ LOUVER



8 TYPICAL EXTERIOR SILL

REVISIONS	DESCRIPTION	PREP'D	DATE	APPROVED



PROVIDE AS SHOWN OR CUT TO SUIT REQ'D. BEVEL.

3 VERT. SECT. SCALE: 1/4" = 1'-0"

4 HORIZ. SECT. SCALE: 3/8" = 1'-0"

5 HORIZ. SECT. SCALE: 1/4" = 1'-0"

6 HORIZ. SECT. SCALE: 1/4" = 1'-0"

7 VERT. SECT. SCALE: 3/8" = 1'-0"

8 VERT. SECT. SCALE: 1/4" = 1'-0"

9 VERT. SECT. SCALE: 1/4" = 1'-0"

10 VERT. SECT. SCALE: 3/8" = 1'-0"

11 VERT. SECT. SCALE: 1/4" = 1'-0"

12 HORIZ. SECT. SCALE: 1/4" = 1'-0"

13 VERT. SECT. SCALE: 1/4" = 1'-0"

14 HORIZ. SECT. SCALE: 1/4" = 1'-0"

15 VERT. SECT. SCALE: 1/4" = 1'-0"

16 VERT. SECT. SCALE: 1/4" = 1'-0"

17 VERT. SECT. SCALE: 1/4" = 1'-0"

18 TYPE SILL

19 TYPE HEAD

20 TYPE JAMB

21 TYPE SILL

1 1/2" WALL PANELS

ATTACH EXTRUDED SECTION TO GIRTS ABOVE 7'-2" & TO BRICK BELOW 7'-2".

STANDING-SEAM ROOFING.

2" RIGID INSUL.

METAL DECK.

METAL COUNTER FLASHING SHAPED TO ROOFING.

PREFIN. STANDING-SEAM ROOFING

UL CLASS 90

1 1/2" RIBS 15" OC.

2" RIGID INS.

1/2" METAL DECK

22 GA GALV. * FIELD PAINTED.

PREFIN. FASCIA.

EXTRUDED ALUM.

PREFIN. PAINT.

1" (NITS) OVERHANG ALL AROUND

*SEPARATE DECK FROM EXTRUSIONS W/ NEOPRENE GASKET, FASTEN @ 6" O.C. W/ SELF DRILL, SELF TAP SCREWS.

PROVIDE STEEL REINFORCING AS REQ'D. TO PROVIDE FOR THE FOLLOWING LOADINGS:

SNOW 30 PSF

WIND 25 PSF

UPLIFT 60 PSF

MIN. 4 FASTENERS PER SIDE. PROVIDE TOTAL UPLIFT RESISTANCE OF 2500 LBS.

BEVEL

FASTEN TO CONCRETE

BELOW 7'-2" FASTEN TO BRICK.

METAL WALL PANELS ABOVE 7'-2". FASTEN EXTR. SECTION TO GIRTS.

MAEDA ENGINEERING INC.
607-A EASTON ROAD
WILLOW GROVE, PA 19090

DESIGN: N.A. DR: J.C.S. CHK: K.S.V.
SUPPLY: N.S.M. CH: ENGR. L.A.G.

FIRM NUMBER: (TITLE)
DATE: (DATE)
APPROVED: (SIGNATURE)

OFFICE IN CHARGE: DATE: (DATE)
APPROVED: (SIGNATURE)

SAISFACTORY TO: DATE: (DATE)

GRAPHIC SCALES
CHECK GRAPHIC SCALES BEFORE USING

0 1" 2" 3" 4" 5" 6"
1" = 1'-0"
1/2" = 1'-0"

0 3" 6" 9" 1' 2'
1/2" = 1'-0"

100% SUBMISSION - DEC. 1993
DEPARTMENT OF THE NAVY NAVAL FACILITIES ENGINEERING COMMAND
NORTHERN DIVISION

LESTER
AIR RESERVE FACILITY
ENGINE 16R FACILITY AND ALTER AIRCRAFT MAINTENANCE SHOPS
ARCHITECTURAL - ENG. I & R
WINDOWS

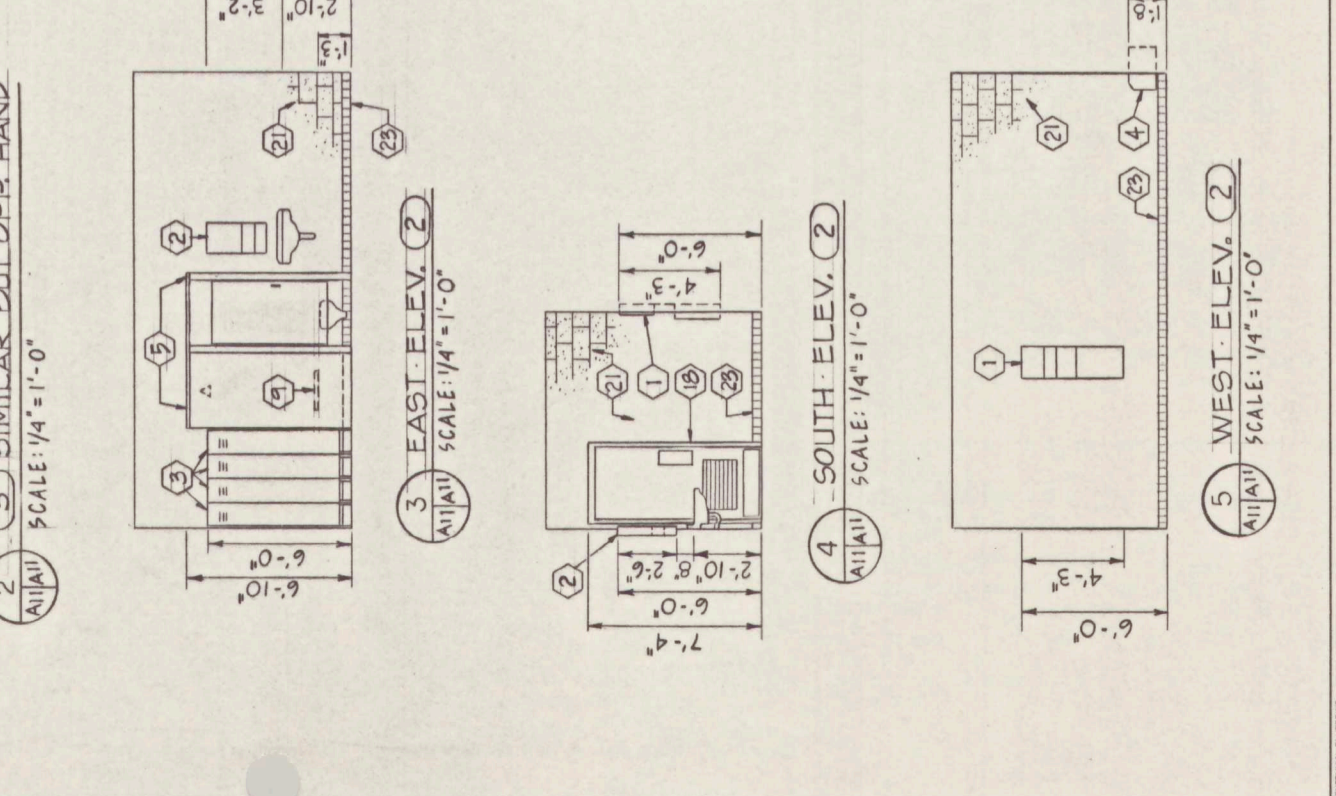
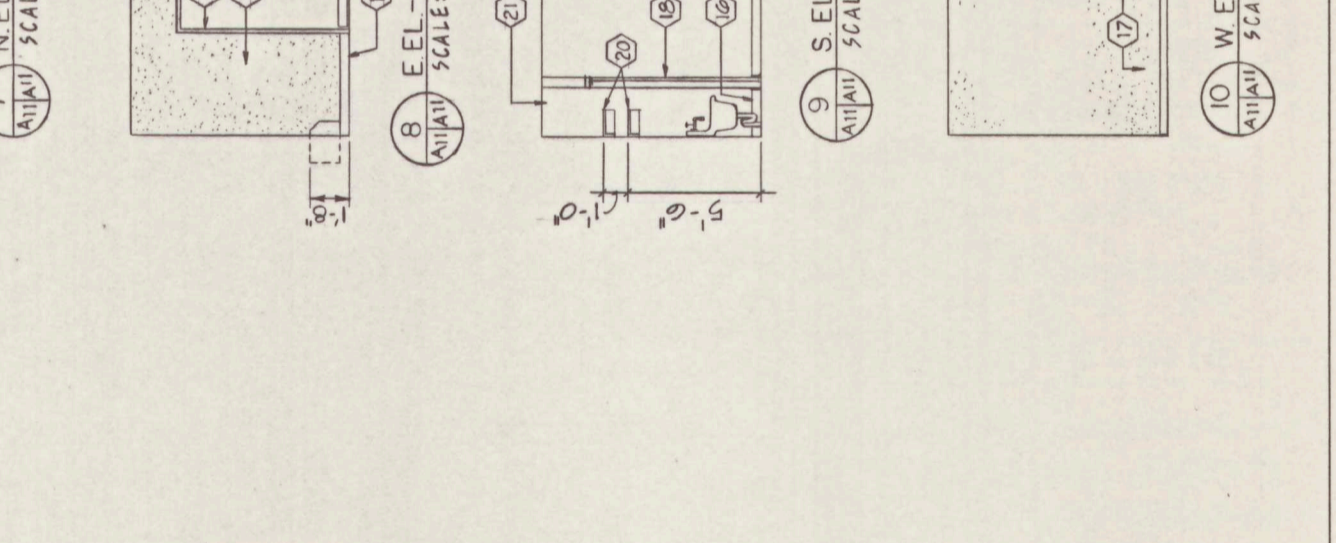
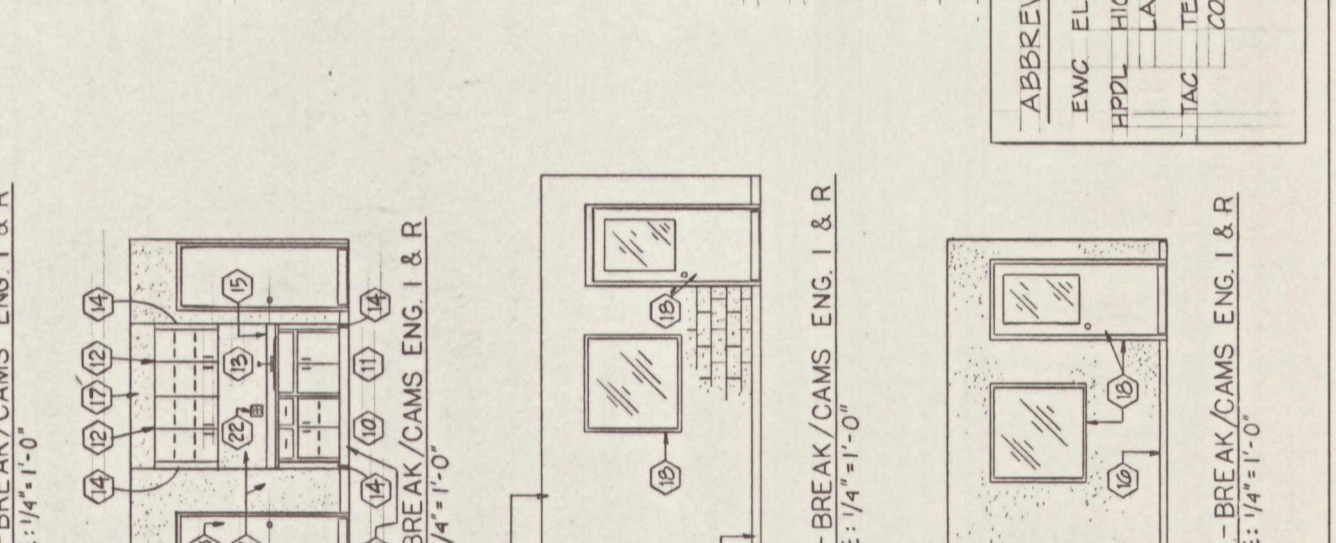
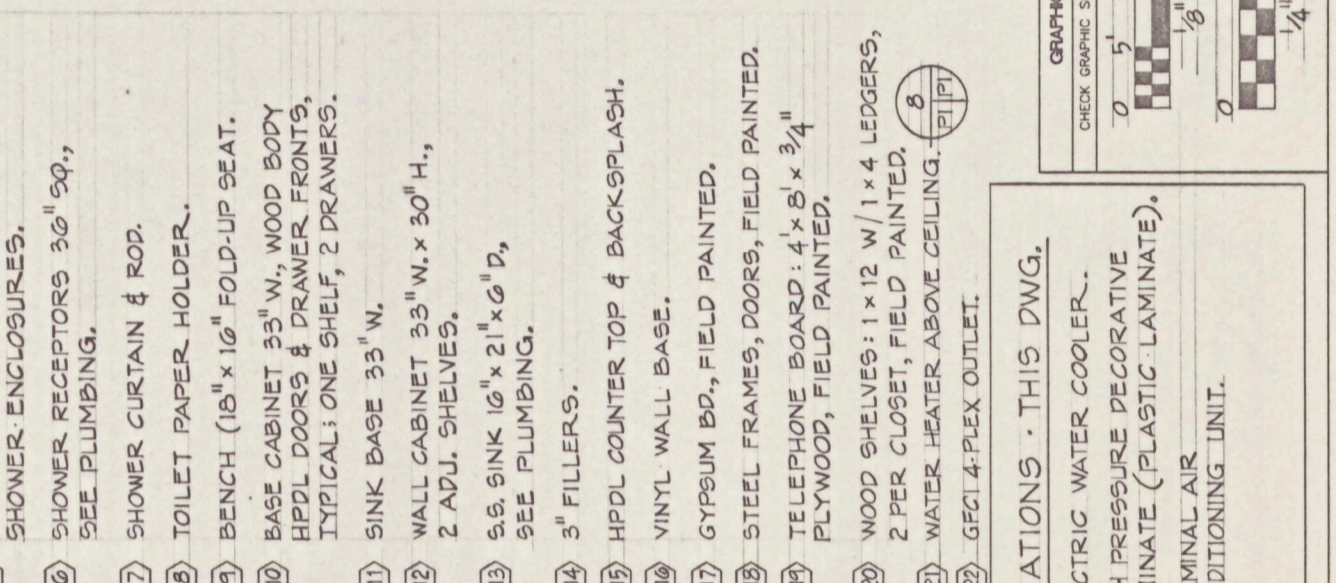
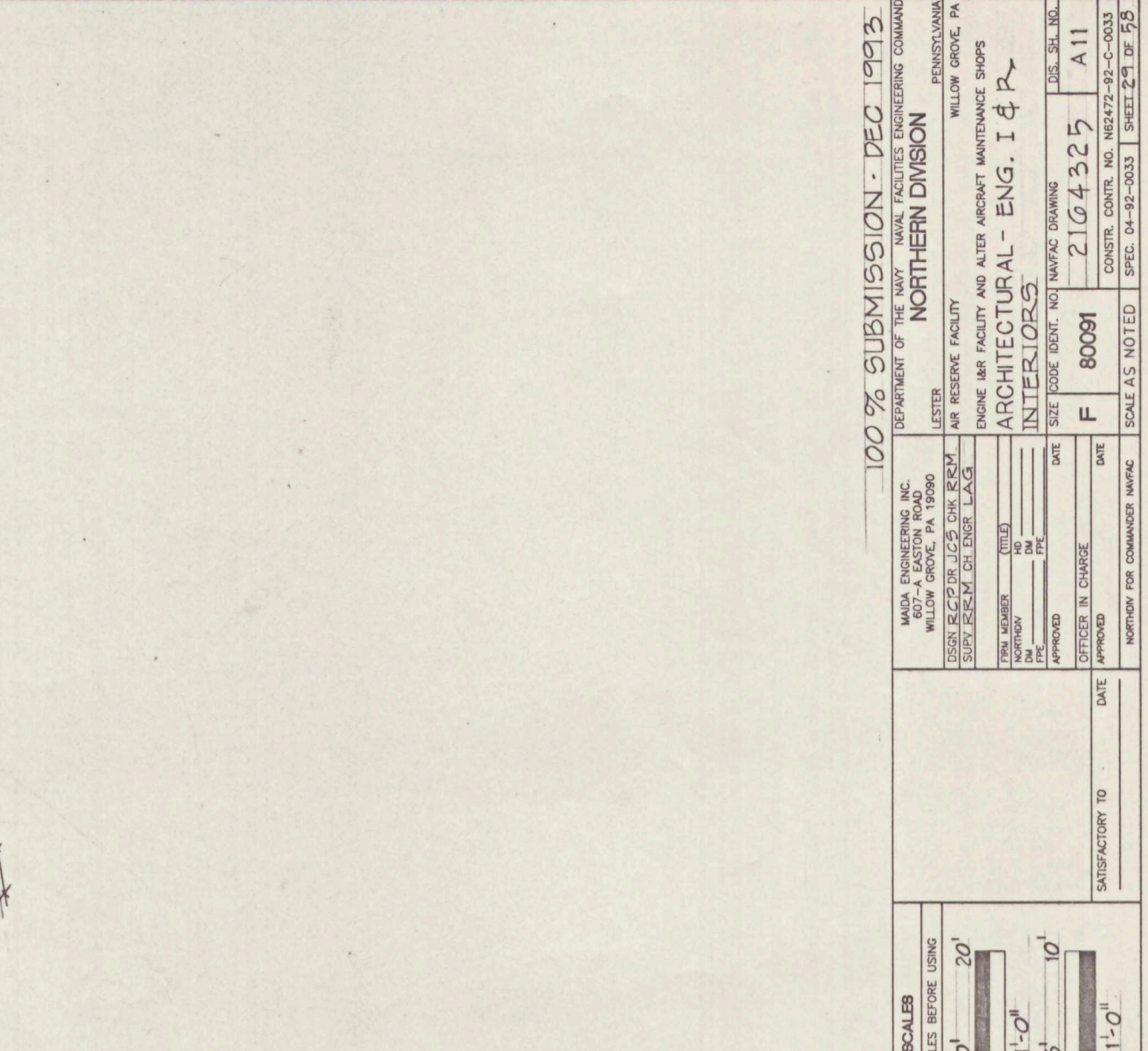
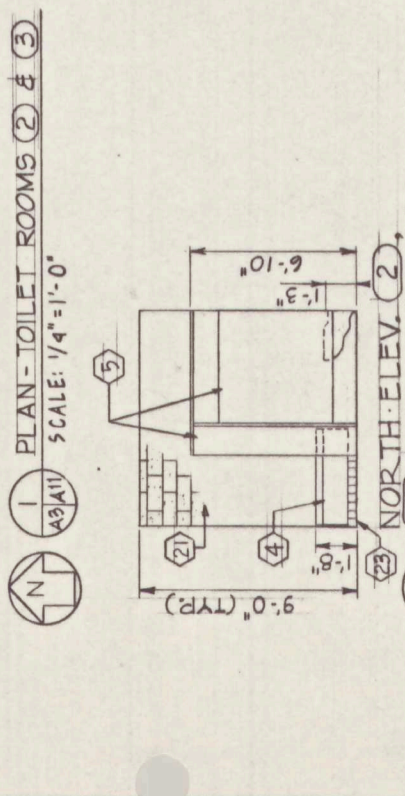
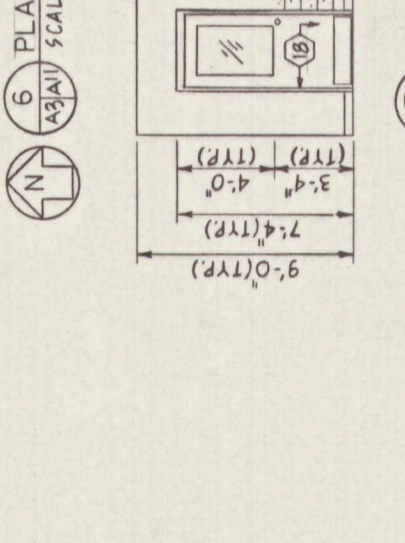
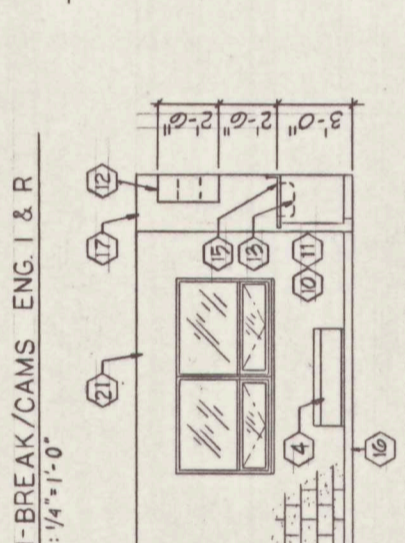
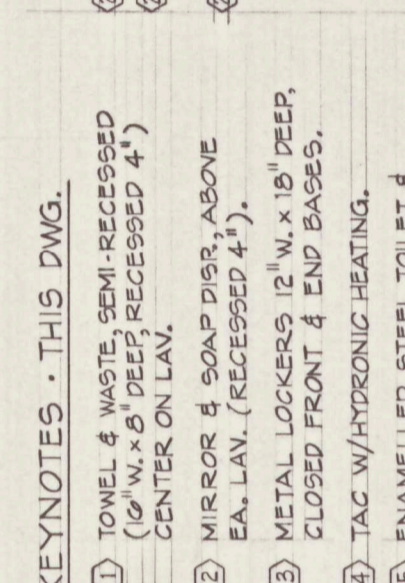
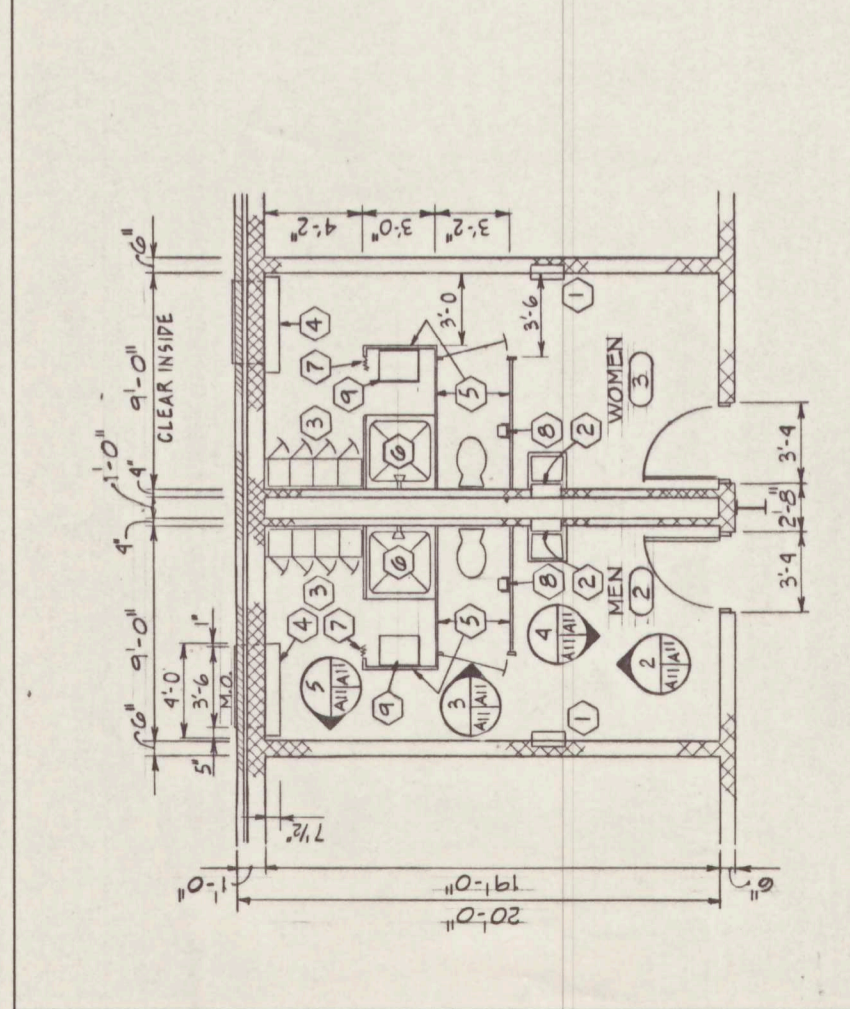
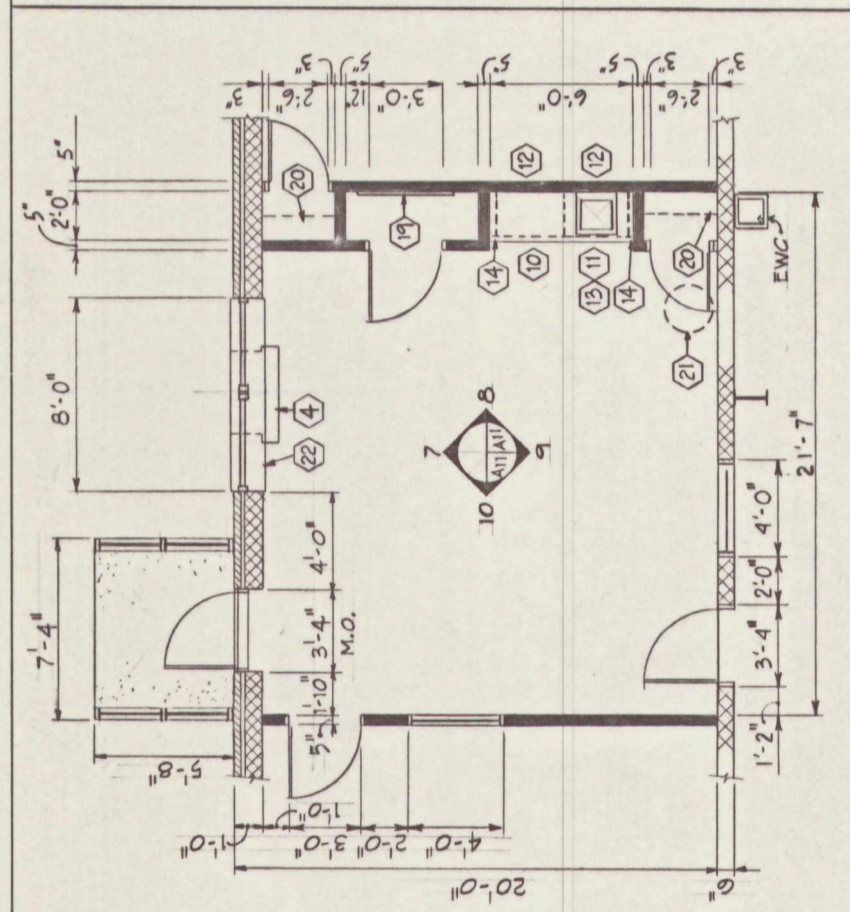
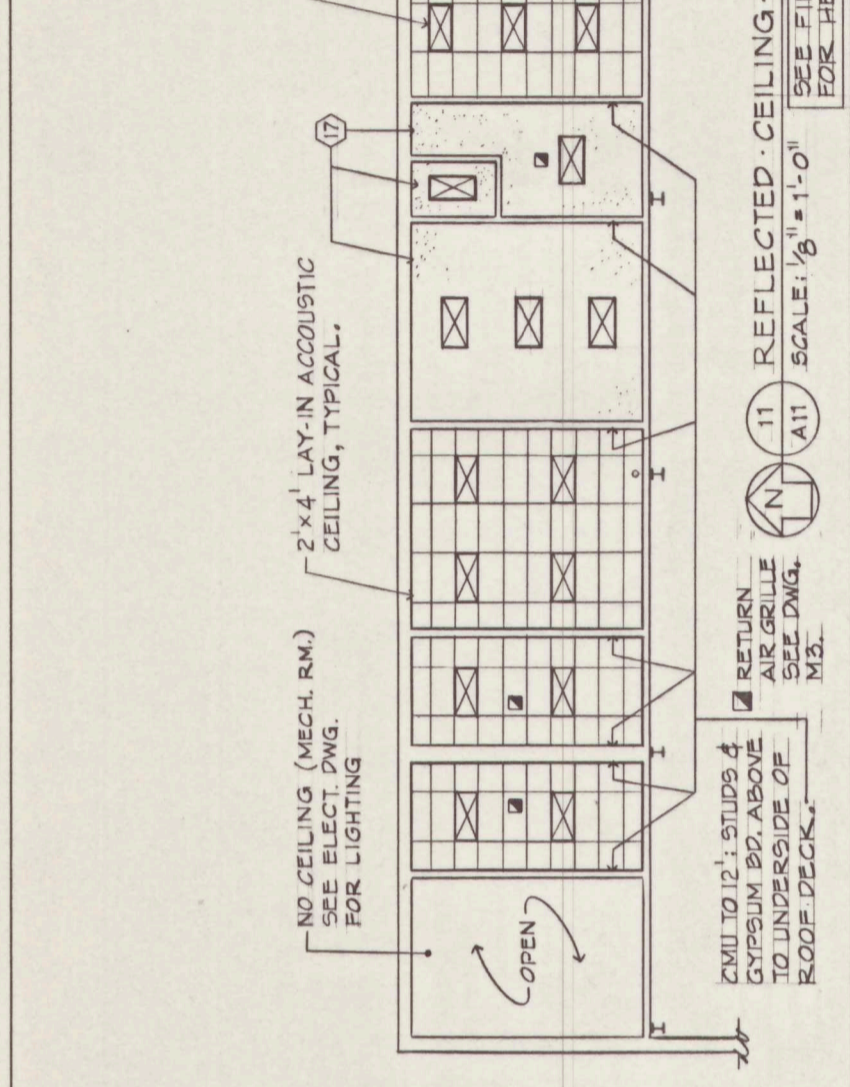
SIZE: CODE IDENT. NO. NAVFAC DRAWING: 2104324
DATE: 10/15/93
DES. SH. NO.: A10

CONSTR. CONTR. NO. NS2472-92-C-0033
SPEC. 04-92-0033 SHEET 2 OF 93

SCALE AS NOTED
80091
F

NORTHROW FOR COMMANDER NAVFAC

LTR	DESCRIPTION	PREP'D	DATE	APPROVED



100% SUBMISSION - DEC 1913
 DEPARTMENT OF THE NAVY - NAVAL FACILITIES ENGINEERING COMMAND
 PENNSYLVANIA
 NORTHERN DIVISION
 LESTER
 AIR RESERVE FACILITY
 ENGINE WAR FACILITY AND ALTER AIRCRAFT MAINTENANCE SHOPS
 ARCHITECTURAL - ENG. I & R
 INTERIORS

WADA ENGINEERING INC.
 1500 WILLOW GROVE, PA 19080
 DESIGNER: [Signature]
 SUPPLEMENTAL ENGINEER: [Signature]
 TITLE: [Signature]
 NO. [Signature]
 DATE: [Signature]
 APPROVED: [Signature]
 OFFICER IN CHARGE: [Signature]
 DATE: [Signature]
 APPROVED: [Signature]
 OFFICER IN CHARGE: [Signature]
 DATE: [Signature]
 NORTHERN FOR COMMANDER NAIFAC

CONSTR. CONTR. NO. N62472-92-C-0033
 SPEC. 04-92-3033
 SCALE AS NOTED
 SHEET 29 OF 58

100% SUBMISSION - DEC 1913
 DEPARTMENT OF THE NAVY - NAVAL FACILITIES ENGINEERING COMMAND
 PENNSYLVANIA
 NORTHERN DIVISION
 LESTER
 AIR RESERVE FACILITY
 ENGINE WAR FACILITY AND ALTER AIRCRAFT MAINTENANCE SHOPS
 ARCHITECTURAL - ENG. I & R
 INTERIORS

CONSTR. CONTR. NO. N62472-92-C-0033
 SPEC. 04-92-3033
 SCALE AS NOTED
 SHEET 29 OF 58

100% SUBMISSION - DEC 1913
 DEPARTMENT OF THE NAVY - NAVAL FACILITIES ENGINEERING COMMAND
 PENNSYLVANIA
 NORTHERN DIVISION
 LESTER
 AIR RESERVE FACILITY
 ENGINE WAR FACILITY AND ALTER AIRCRAFT MAINTENANCE SHOPS
 ARCHITECTURAL - ENG. I & R
 INTERIORS

CONSTR. CONTR. NO. N62472-92-C-0033
 SPEC. 04-92-3033
 SCALE AS NOTED
 SHEET 29 OF 58

100% SUBMISSION - DEC 1913
 DEPARTMENT OF THE NAVY - NAVAL FACILITIES ENGINEERING COMMAND
 PENNSYLVANIA
 NORTHERN DIVISION
 LESTER
 AIR RESERVE FACILITY
 ENGINE WAR FACILITY AND ALTER AIRCRAFT MAINTENANCE SHOPS
 ARCHITECTURAL - ENG. I & R
 INTERIORS